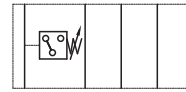




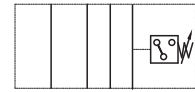
MODULAR PRESSURE SWITCH
MPS SERIES



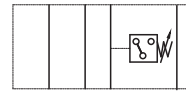
■ Symbols



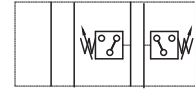
P T B A
MPS-02P/03P



P T B A
MPS-02A/03A



P T B A
MPS-02B/03B



P T B A
MPS-02W/03W

■ SPECIFICATIONS

| Series | Rated Operation Pressure(bar) | Pressure Adj. Range(bar) | Rated Flow (L/min) | Max. Operated Pressure(bar) |
|--------------|-------------------------------|--------------------------|--------------------|-----------------------------|
| MPS-02※-※-40 | 35 | 0: 8~35 | 35 | 140 |
| | 70 | 1: 10~70 | | 210 |
| | 150 | 2: 30~150 | | 350 |
| | 230 | 3: 50~230 | | 420 |
| MPS-03※-※-40 | 35 | 0: 8~35 | 70 | 140 |
| | 70 | 1: 10~70 | | 210 |
| | 150 | 2: 30~150 | | 350 |
| | 230 | 3: 50~230 | | 420 |

■ HOW TO ORDER

| MPS | -02 | A | -1 | -40 |
|-------------------------|------------------|--|---|-------------|
| Series | Nominal Size(mm) | Control Port | Pressure Adj. Range(bar) | Design Code |
| Modular Pressure Switch | 02: 6 03: 10 | A: A Port Only B: B Port Only P: P Port Only W: A & B Port Only | 0: 8~35 1: 10~70 2: 30~150 3: 50~230 | |