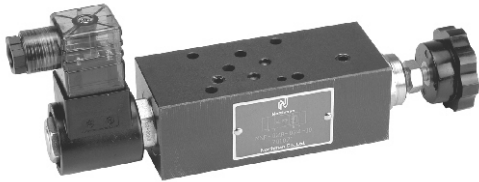




# MODULAR SOLENOID OPERATED SPEED CONTROL VALVE

## MSF SERIES



### SPECIFICATIONS

Nominal Size	Max. Operated Pressure (bar)	Rated Flow (L/min)
02	250	20
03		30

### HOW TO ORDER

MSF	-02	A	-NO	-I	-D24	-10
Series	Nominal Size	Function Controlled Port	Controlled Model		Coil Voltage	Design Code
Modular Solenoid Operated Speed Control Valve	02: 6mm 03: 10mm	A: A Port B: B Port P: P Port T: T Port	NC: Normally Closed NO: Normally Opened	No Code: Meter Out I: Meter In	D12: DC12V D24: DC24V A115: AC115V A230: AC230V	10

### SYMBOLS

