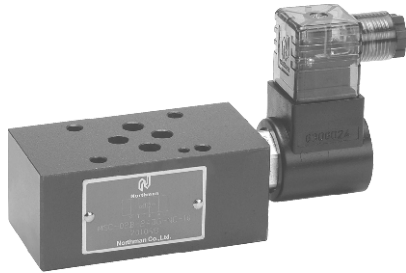




# MODULAR SOLENOID CHECK VALVE

## MSC SERIES



### SPECIFICATIONS

Nominal Size	Max. Operated Pressure (bar)	Max. Flow (L/min)
02	250	30
03		70

### HOW TO ORDER

MSC	-02	W	-230	AG	-NC	-40
Series	Nominal Size	Function Controlled Port	Coil Voltage	Terminations	Valve Configuration	Design Code
Modular Pilot Check Valve	02: 6mm 03: 10mm	A: A Port B: B Port W: A & B Port	D12: DC12V D24: DC24V A115: AC115V A230: AC230V	DG: DIN Connector For DC Coil DL: ½" Conduit For DC Coil AG: DIN Connector For AC Coil AP: ½" Conduit For AC Coil	NC: Normally Closed NO: Normally Opened	①

① Design Code: 10: without manually release device. 30: two-ways.

Note: The prices will be varied for different designs. Please contact Northman sales representatives for the details.

### SYMBOLS

