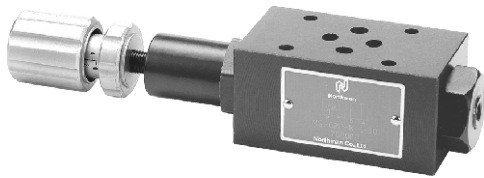




MODULAR SEQUENCE VALVE
MS SERIES

■ **SPECIFICATIONS**

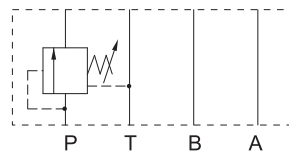


Nominal Size	Max. Operated Pressure (bar)	Rated Flow (L/min)
02	250	30
03	250	70

■ **HOW TO ORDER**

MS	-03	P	-K	-1	-10
Series	Nominal Size	Function Controlled Port	Adjustment Model	Pressure Adj. Range(bar)	Design Code
Modular Sequence Valve	02: 6mm 03: 10mm	P: P Port	No Code: Without Knob K: With Plastic Knob	1: ※-70 2: ※-140 3: ※-210	10

■ **SYMBOL**



MS-※P