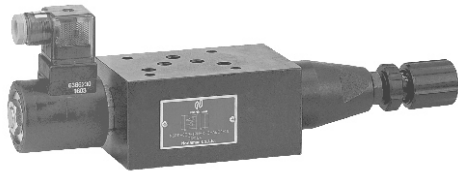




**MODULAR SOLENOID CONTROLLED RELIEF VALVE**  
MSRF SERIES

**■ SPECIFICATIONS**

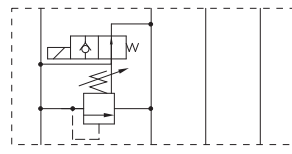


Nominal Size	Max. Operated Pressure (bar)	Rated Flow (L/min)
02	250	35
03	250	70

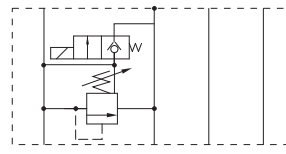
**■ HOW TO ORDER**

MSRF	-03	P	-1PN	-K	-1	-D24	-10
Series	Nominal Size	Function Controlled Port	Control Type	Adjustment Model	Pressure Adj. Range(bar)	Coil Voltage	Design Code
Modular Solenoid Controlled Relief Valve	02: 6mm 03: 10mm	P: P Port	1PN: Normally Vented 1NP: Energized To Vent	No Code: Without Knob K: With Plastic Knob	1: 8-70 2: 35-140 3: 70-210	D12: DC12V D25: DC24V A115: AC115V A230: AC230V	10

**■ SYMBOLS**



MSRF-02/03P-1PN



MSRF-02/03P-1NP