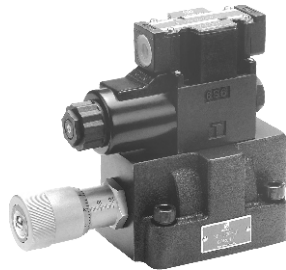
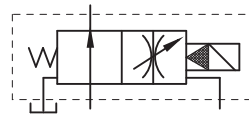




SOLENOID OPERATED FLOW CONTROL VALVE
SF SERIES



■ Symbol



■ HOW TO ORDER

SF	-G	06	-ET	-A220	-10	-10
Series	Mounting Style	Nominal Size	Control Type	Coil Voltage	Wiring	Design Code
①	G: Subplate Mounted	06: 20mm 10: 32mm	T: External Drain Internal Pilot ET: External Drain & Pilot	②	10: Joint Box with Indicating Lights 20: Hirschmann Type with Indicating Lights No Code: THF	10

① Series

Code	Symbol	Standard
SF		G06/G10
SDF		G06/G10
SD		G06/G10
SFD		G06/G10
SKF		G06
THF		G06/G10

② Coil Voltage

Coil Type	Voltage
A110	AC110V,60Hz;AC100V,50Hz
A120	AC120V,60Hz;AC110V,50Hz
A220	AC220V,60Hz;AC200V,50Hz
A240	AC240V,60Hz;AC220V,50Hz
R110	AC110V,60Hz;AC100V,50Hz
R120	AC120V,60Hz;AC110V,50Hz
R220	AC220V,60Hz;AC200V,50Hz
R240	AC240V,60Hz;AC220V,50Hz
D12	DC12V
D24	DC24V
No Code	THF

**■ SPECIFICATIONS**

Model No.	Max. Operated Pressure (bar)	Max. Flow (L/min)	Weight (kg)	Bolt	Pilot Valve	
SF-G06	250	120	6.40	4-M10 X 1.5P X 45L	SWH-G02-B2S	
SDF-G06			6.40		SWH-G02-B2	
THF-G06			5.00		—	
SD-G06			6.10		SWH-G02-B2	
SFD-G06			6.70		SWH-G02-B2S	
SKF-G06			7.50		SWH-G02-C4	
SF-G10		240	240	9.90	4-M12 X 1.75P X 45L	SWH-G02-B2S
SDF-G10				9.90		SWH-G02-B2
THF-G10				8.40		—
SD-G10				9.40		SWH-G02-B2
SFD-G10	10.4			SWH-G02-B2S		