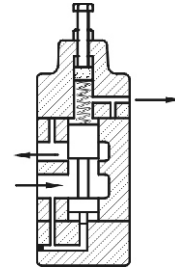
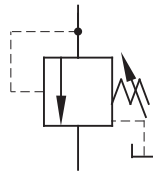




PRESSURE CONTROL VALVE

SV SERIES

■ Symbol



■ HOW TO ORDER

SV	-G	06	-1	-ET	-20	-N
Series	Mounting Style	Nominal Size	Pressure Adj. Range(bar)	Control Type	Design Code	Pipe Threads
Pressure Control Valve	G: Subplate Mounted T: Threaded Connection	03: 10mm 06: 20mm 10: 32mm	0: 18-35 1: 35-70 2: 70-140	No Code: Internal Pilot & Drain E: External Piloted & Internal Drain T: Internal Piloted & External Drain ET: External Piloted & Drain	20	N: NPT Pipe Threads No Code: PT Pipe Threads

■ SPECIFICATIONS

Model No.	Max. Operated Pressure (bar)	Pressure Adj. Range(bar)	Max. Flow (L/min)
SV-03 Series	210	0: 18-35	50
SV-06 Series		1: 35-70	125
SV-10 Series		2: 70-140	250