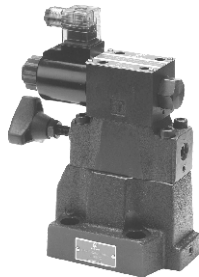


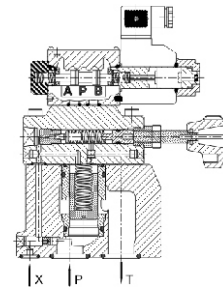
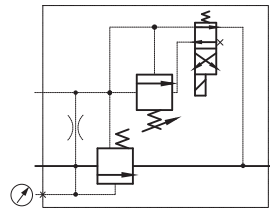


# LOW NOISE TYPE SOLENOID CONTROLLED PILOT OPERATED RELIEF VALVE

## HSRF SERIES



### Symbol



### HOW TO ORDER

HSRF	-G	06	-1PN	-1	-L	-A220	-10	-30
Series	Mounting Style	Nominal Size	Control Type	Pressure Adj. Range(bar)	Solenoid Valve Position	Coil Voltage	Wiring	Design Code
Low Noise Type Solenoid Controlled Pilot Operated Relief Valve	G: Subplate Mounted	03: 10mm 06: 20mm	1PN: Normally Vented 1NP: Energized To Vent	1: 7-70 2: 35-140 3: 70-250	L: (Standard) Left(T Port Side) R: (Made To Order) Right(P Port Side)	①	②	30: Standard 32: Low Pressure

Note: Design code 30: knob can be screwed out entirely. Design code 32: knob can NOT be screwed out entirely.

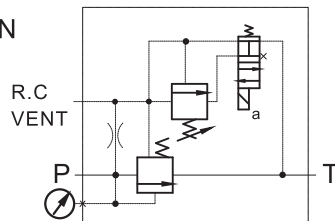
#### ① Coil Voltage

Coil Type	Voltage	Coil Type	Voltage
A110	AC110V,60Hz;AC100V,50Hz	R110	AC110V,60Hz;AC100V,50Hz
A120	AC120V,60Hz;AC110V,50Hz	R120	AC120V,60Hz;AC110V,50Hz
A220	AC220V,60Hz;AC200V,50Hz	R220	AC220V,60Hz;AC200V,50Hz
A240	AC240V,60Hz;AC220V,50Hz	R240	AC240V,60Hz;AC220V,50Hz
D12	DC12V	D24	DC24V

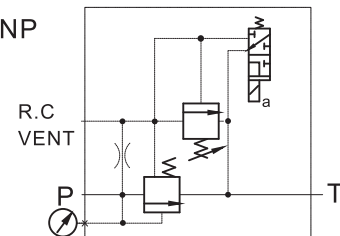
#### ② Wiring ■ 10: Joint Box with Indicating Lights ■ 20: Hirschmann Type with Indicating Lights

Note: Control method of hydraulic principles.

HSRF-G※-1PN



HSRF-G※-1NP



### SPECIFICATIONS

Model No.	Max. Operated Pressure (bar)	Pressure Adj. Range (bar)	Max. Flow (L/min)	Bolt
HSRF-G03	250	1: 7-70	100	4-M12 X 40L
HSRF-G06		2: 35-140 3: 70-250	200	