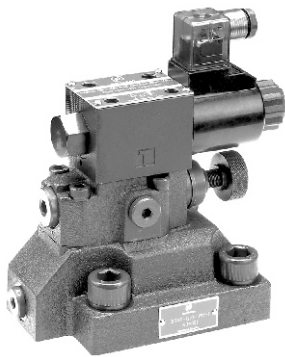
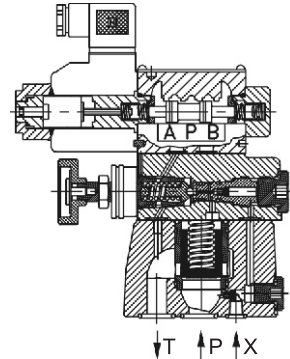
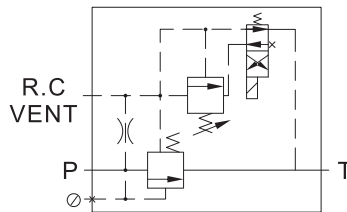




LOW NOISE TYPE SOLENOID CONTROLLED PILOT OPERATED RELIEF VALVE
DSRF SERIES



■ **Symbol**



■ **HOW TO ORDER**

DSRF	-G	06	-1PN	-1	-A220	-10	-30
Series	Mounting Style	Nominal Size	Control Type	Pressure Adj. Range(bar)	Coil Voltage	Wiring	Design Code
Low Noise Type Solenoid Controlled Pilot operated Relief Valve	Subplate Mounted	03: 10mm 06: 20mm 10: 32mm	1PN: Normally Vented 1NP: Energized Vent	1: ※-50 4: ※-315 2: ※-100 5: ※-350 3: ※-200	①	②	30

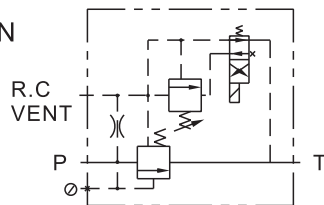
① **Coil Voltage**

Coil Type	Voltage	Coil Type	Voltage
A110	AC110V,60Hz;AC100V,50Hz	R110	AC110V,60Hz;AC100V,50Hz
A120	AC120V,60Hz;AC110V,50Hz	R120	AC120V,60Hz;AC110V,50Hz
A220	AC220V,60Hz;AC200V,50Hz	R220	AC220V,60Hz;AC200V,50Hz
A240	AC240V,60Hz;AC220V,50Hz	R240	AC240V,60Hz;AC220V,50Hz
D12	DC12V	D24	DC24V

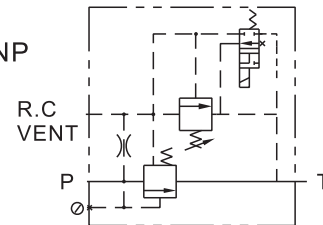
② **Wiring** ■ 10: Joint Box with Indicating Lights ■ 20: Hirschmann Type with Indicating Lights

Note: Control method of hydraulic principles.

DSRF-G※-1PN



DSRF-G※-1NP



■ **SPECIFICATIONS**

Model No.	Max. Operated Pressure (bar)	Pressure Adj. Range (bar)	Rated Flow (L/min)	Bolt
DSRF-G03	350	1: ※-50b 4: ※-315 2: ※-100 5: ※-350 3: ※-200	250	4-M12 X 40L
DSRF-G06			500	4-M16 X 50L
DSRF-G10			650	4-M18 X 50L