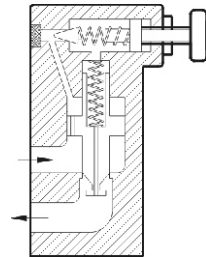
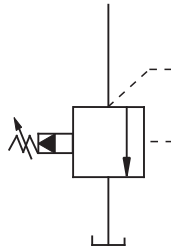




PILOT OPERATED RELIEF VALVE
RF SERIES



■ Symbol



■ HOW TO ORDER

RF	-G	06	-1	-32	-N
Series	Mounting Style	Nominal Size	Pressure Adj. Range	Design Code	Pipe Threads
Pilot Operated Relief Valve	G: Subplate Mounted T: Threaded Connection	04: 10mm 06: 20mm 10: 32mm	1: 7-70bar 2: 35-140bar 3: 70-250bar	32: Low Pressure	N: NPT Pipe Threads No Code: PT Pipe Threads

■ SPECIFICATIONS

Model No.	Max. Operated Pressure (bar)	Pressure Adj. Range (bar)	Max. Flow (L/min)	Bolt
RF-G04	250	1: 70-70 2: 35-140 3: 70-250	100	2-M12 X 95L 2-M12 X 75L
RF-T04				--
RF-G06			200	2-M16 X 80L 2-M16 X 60L
RF-T06				--
RF-G10			400	2-M20 X 70L 2-M20 X 90L
RF-T10				--