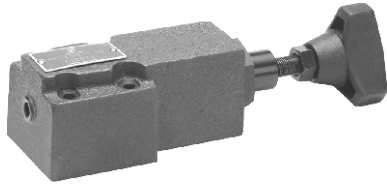


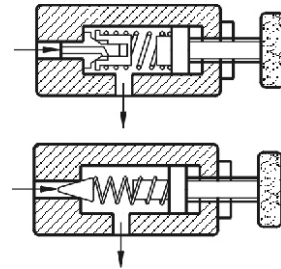
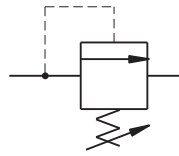


DIRECT TYPE RELIEF VALVE

RF SERIES



Symbol



HOW TO ORDER

RF	-G	01	-1	-32	-N
Series	Mounting Style	Nominal Size	Pressure Adj. Range	Design Code	Pipe Threads
Direct Type Relief Valve	G: Subplate Mounted T: Threaded Connection	01: 3mm 02: 6mm	0: 7-35bar 1: 7-70bar 2: 35-140bar 3: 70-250bar	30: Standard 32: Low Pressure	N: NPT Pipe Threads No Code: PT Pipe Threads

SPECIFICATIONS

Model No.	Max. Operated Pressure (bar)	Pressure Adj. Range (bar)	Max. Flow (L/min)	Bolt	Weight (kg)
RF-G01-1	250	7-70	2	4-M5 X 45L (#10-24UNC-1-3/4")	1.4
RF-G01-2		35-140			
RF-G01-3		70-250			
RF-G02-0	250	7-35	20	4-M5 X 45L (#10-24UNC-1-3/4")	1.5
RF-G02-1		7-70			
RF-G02-2		35-140			
RF-G02-3		70-250			