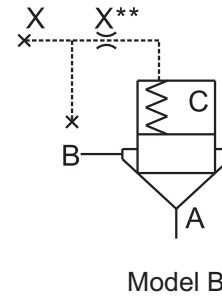
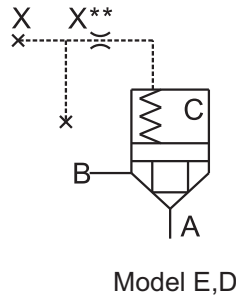




LOGIC VALVE
LCV SERIES

■ Symbols



■ HOW TO ORDER

LCV	-32	-05	-E	-N
Series	Design Code	Cracking Pressure	Valve Type	Control Type
Logic Valve	16 , 25 , 32 40 , 50 , 63	05: 0.5bar 20: 2.0bar 50: 4.5bar	E: Directional & Flow Control Logic Valve D: Shockless Logic Valve B: Relief Logic Valve	N: Normally Opened No Code: Normally Closed

■ SPECIFICATIONS

Model No.	Max. Operated Pressure	Max. Flow	Cracking Pressure	Superficial Measure Ratio
LCV-16-***	315bar	130 lpm	05: 0.5 bar 20: 2.0 bar 50: 4.5 bar	Model E: 2:1 Model D: 2:1 Model B: 1:1
LCV-25-***		350 lpm		
LCV-32-***		500 lpm		
LCV-40-***		850 lpm		
LCV-50-***		1400 lpm		
LCV-63-***		2100 lpm		