



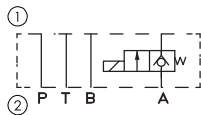
■ SPECIFICATIONS

Nominal Size	Max. Operated Pressure (bar)	Rated Flow (L/min)
02	345	27
03		76

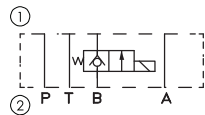
■ HOW TO ORDER

H-MSC	-02	A	-230	AG	-NC	-10
Series	Nominal Size	Function Controlled Port	Coil Voltage	Terminations	Valve Configuration	Design Code
High pressure modular solenoid check valve	02: 6mm	A: Port A B: Port B	12: DC12V 24: DC24V	DG: DIN Connector For DC Coil DL: 1/2" Conduit For DC Coil	NC: Normally closed NO: Normally Opened	10
	03: 10mm		115: AC115V 230: AC230V	AG: DIN Connector For AC Coil AP: 1/2" Conduit For AC Coil		

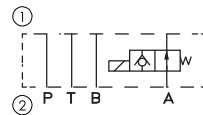
■ Symbols (①: Component side ②: Plate side)



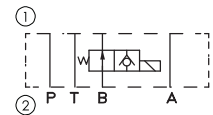
H-MSC-02/03A- ※ -NC-10



H-MSC-02/03B- ※ -NC-10



H-MSC-02/03A- ※ -NO-10



H-MSC-02/03B- ※ -NO-10

When the fluid flow in from the opposite direction of the arrow→, it will be greatly restricted.
(only 1L/min fluid can be flew through under 140 bar differential pressure).