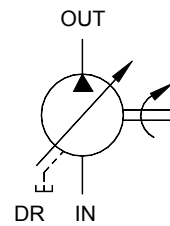




**SYMBOL**

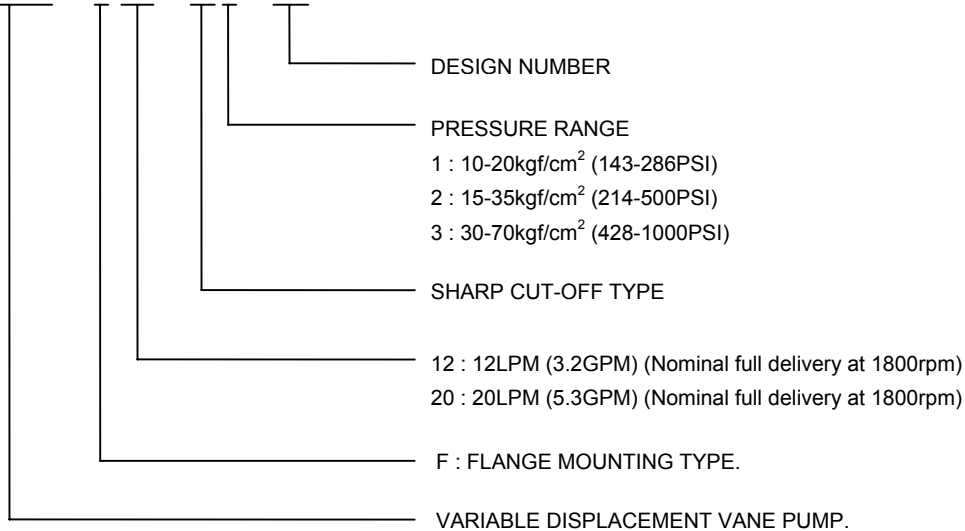


**FEATURES**

- VPVC-F\* series offer design engineer another opportunity to design circuits with high efficiency.
- Built-in compensator control automatically adjusts pump delivery to system volume requirements at selected pressures. System relief valve is not needed.
- Horsepower waste is reduced and heat generated is much less than fixed displacement pumps.
- Volume control adjustment is standard which permits user to vary maximum pump output.

**HOW TO ORDER**

**VPVC - F12 - A1 - 20**

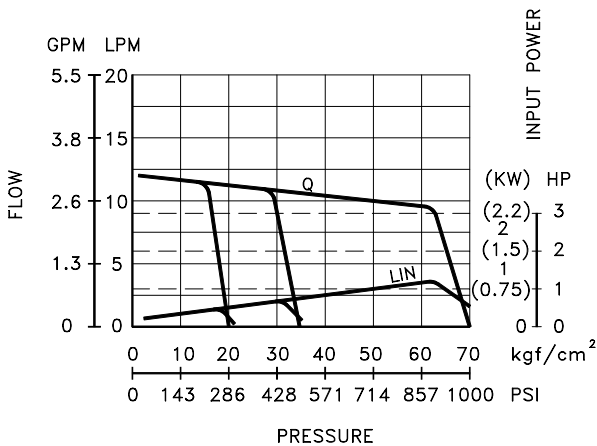


## SPECIFICATIONS

MODEL	DELIVERY AT UNLOADING LPM		PRESSURE ADJ. RANGE kgf/cm <sup>2</sup> (PSI)	SPEED OF ROTATION		MAX. SET PRESSURE kgf/cm <sup>2</sup> (PSI)	WEIGHT kgs (lbs)
	1800rpm	1500rpm		MAX.	MIN.		
VPVC-F12-A1-02	12	10	10 - 20 (142 - 284)	1800	800	20 (284)	5 (11)
VPVC-F12-A2-02			15 - 35 (214 - 500)			35 (500)	
VPVC-F12-A3-02			30 - 70 (428 - 1000)			70 (1000)	
VPVC-F20-A1-02	20	17	10 - 20 (142 - 284)	1800	800	20 (284)	5 (11)
VPVC-F20-A2-02			15 - 35 (214 - 500)			35 (500)	
VPVC-F20-A3-02			30 - 70 (428 - 1000)			70 (1000)	

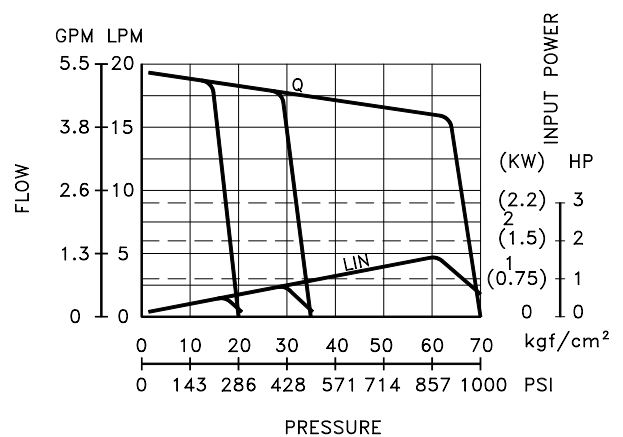
## PERFORMANCE CURVES

VPVC-F12-A\*-02  
(1800 rpm)



Q : DELIVERY  
LIN : INPUT POWER

VPVC-F20-A\*-02  
(1800 rpm)



Q : DELIVERY  
LIN : INPUT POWER

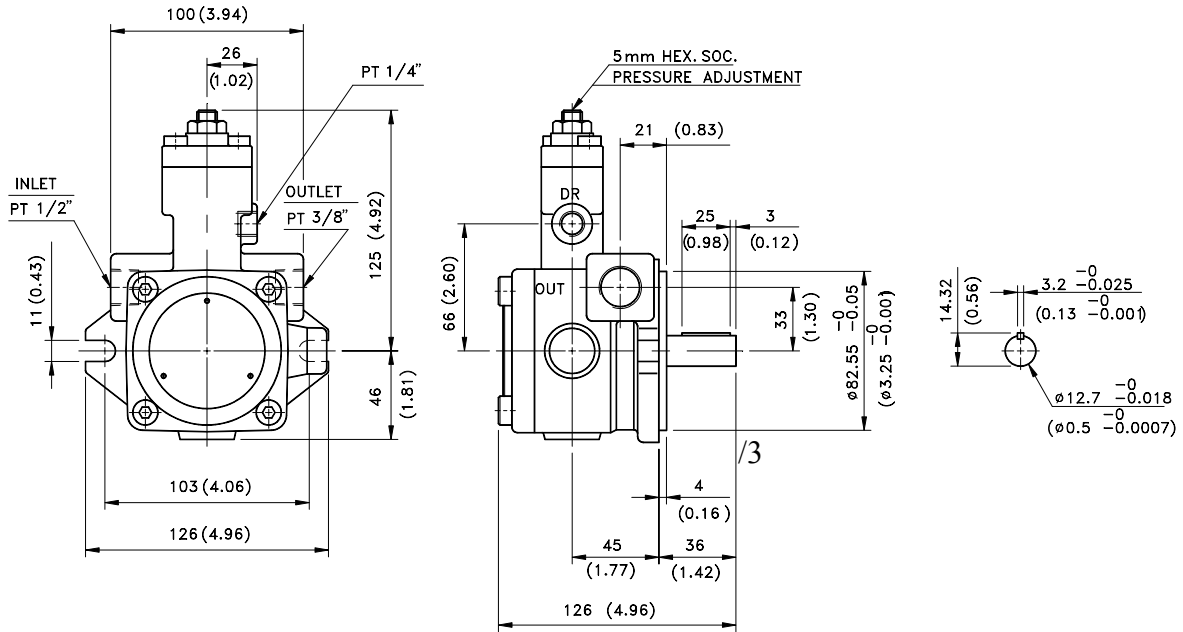
# INSTALLATION DIMENSIONS

VPVC-F12-A\*-02

FLANG TYPE

UNIT : mm(inch)

WEIGHT : 5 kgs



VPVC-F20-A\*-02

FLANG TYPE

WEIGHT : 5 kgs

