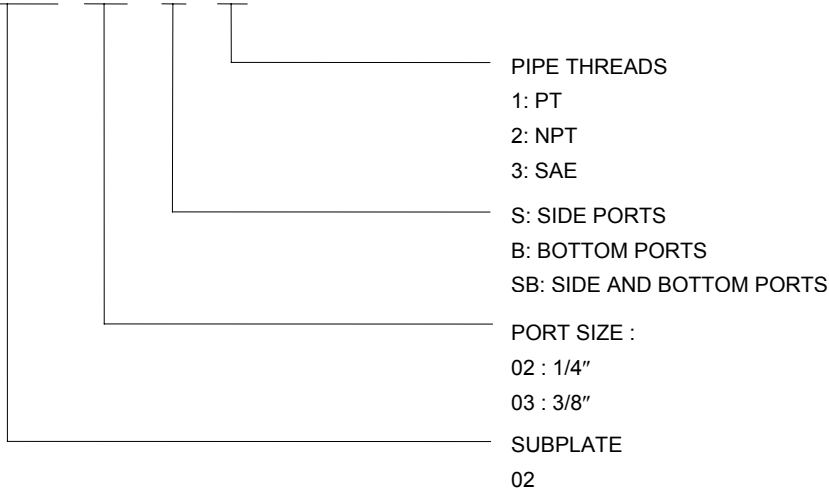


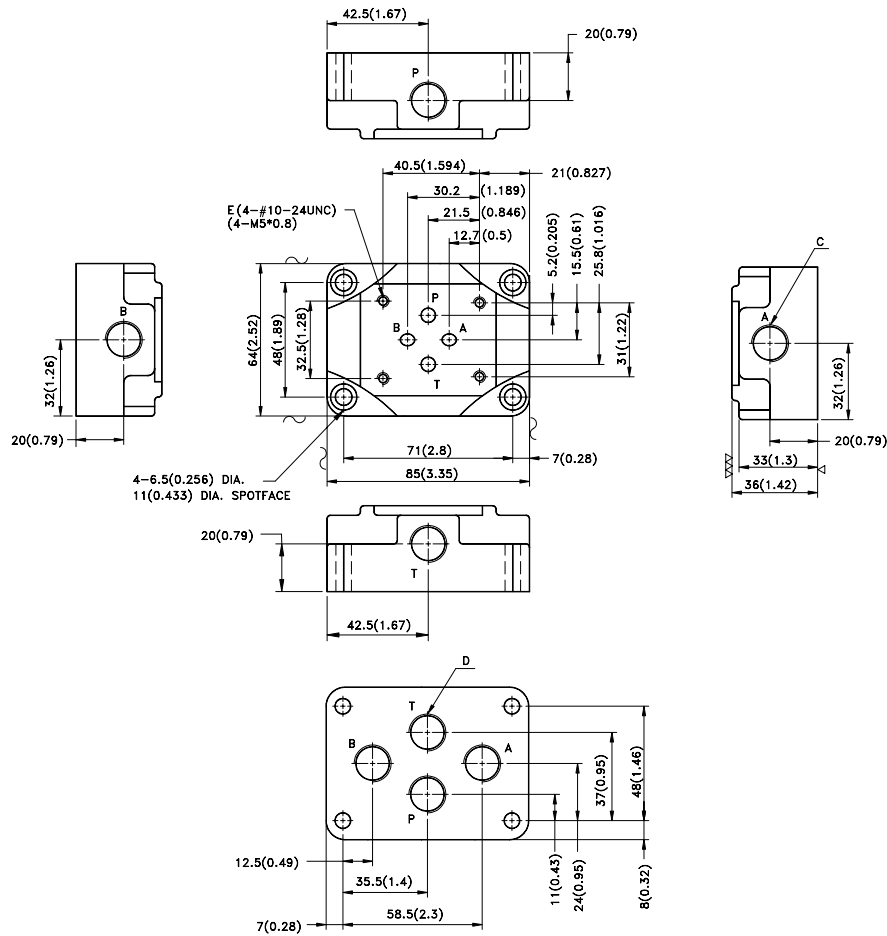
HOW TO ORDER

M02 - 02 - S - 1



INSTALLATION DIMENSIONS

UNIT: mm (inch)
 WEIGHT: 1.07kgs(2.36lbs)



SUBPLATE
M02 SERIES

MODEL			PORT SIZE			MODEL			PORT SIZE		
			C	D	E				C	D	E
M02-02	- S	-1	4-1/4" PT	-	4-M5x0.8P	M02-03	- S	-1	4-3/8" PT	-	4-M5x0.8P
		-2	4-1/4" NPT	-	4-#10-24UNC			-2	4-3/8" NPT	-	4-#10-24UNC
		-3	4-1/4" SAE-2B	-	4-#10-24UNC			-3	4-3/8" SAE-2B	-	4-#10-24UNC
	- B	-1	-	4-1/4" PT	4-M5x0.8P		- B	-1	-	4-3/8" PT	4-M5x0.8P
		-2	-	4-1/4" NPT	4-#10-24UNC			-2	-	4-3/8" NPT	4-#10-24UNC
		-3	-	4-1/4" SAE-2B	4-#10-24UNC			-3	-	4-3/8" SAE-2B	4-#10-24UNC
	- SB	-1	4-1/4" PT	4-1/4" PT	4-M5x0.8P		- SB	-1	4-3/8" PT	4-3/8" PT	4-M5x0.8P
		-2	4-1/4" NPT	4-1/4" NPT	4-#10-24UNC			-2	4-3/8" NPT	4-3/8" NPT	4-#10-24UNC
		-3	4-1/4" SAE-2B	4-1/4" SAE-2B	4-#10-24UNC			-3	4-3/8" SAE-2B	4-3/8" SAE-2B	4-#10-24UNC

REMARK: Various port sizes/pipe threads are available upon request.