



Hydraulic Circuit Examples

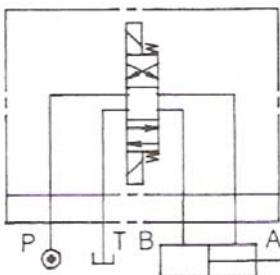
Directional Control Valve and Subplate

Directional Control Valve, One Module and Subplate

Directional Control Valve, Two Modules and Subplate

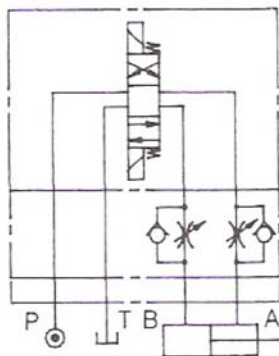
The following circuit examples show typical mountings of a Northman directional control valve to a subplate with and without modular valves.

Note: A complete hydraulic circuit is not shown. Hydraulic circuits vary widely depending on the functional purposes for which they are designed. The following examples show only the mounting of a Northman Fluid Power directional control valve and its modular valve accessories to a subplate in a typical cylinder control application. As always, the circuit designer must adhere to standard fluid power design practices to ensure proper pressure control and safety.



Circuit #1
Directional Control Valve and Subplate

This circuit shows a directional control valve mounted to a subplate and controlling a cylinder. Any spool style may be used with this mounting style.



Circuit #2
Directional Control Valve, Flow Control Valve and Subplate

This circuit shows a directional control valve mounted with a flow control modular valve to a subplate and controlling a cylinder. Any spool style may be used with this mounting style.