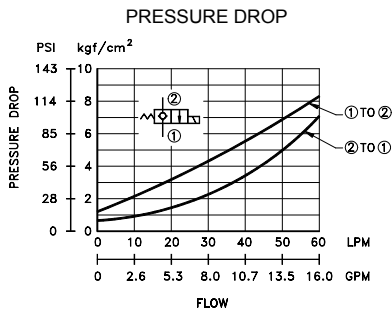


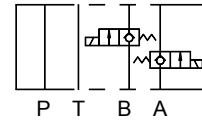


PERFORMANCE CURVES

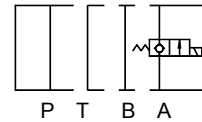
TEST FLUID VISCOSITY : 35 cSt (175 SSU)
TEST TEMPERATURE : 50°C (122°F)



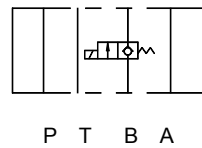
SYMBOLS



MSC-03W-*****-NC-**



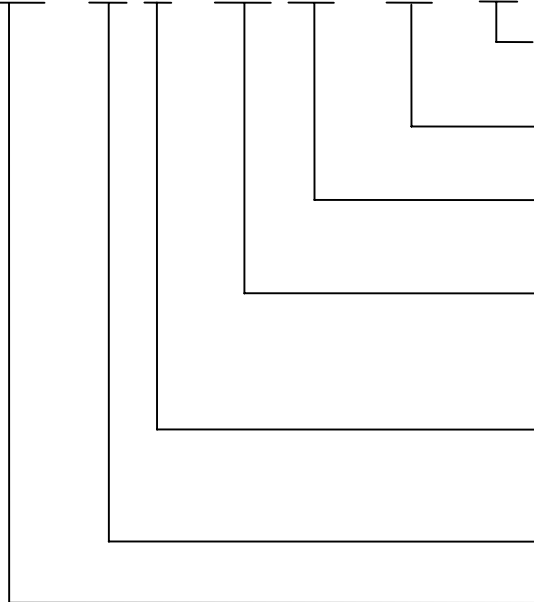
MSC-03A-*****-NC-**



MSC-03B-*****-NC-**

HOW TO ORDER

MSC - 03 W - 230 AP - NC - 10



- OPTION
10: W/O MANUAL-OVERRIDE OPTION
20: W/I MANUAL-OVERRIDE OPTION
- VALVE CONFIGURATION
NC: NORMALLY-CLOSED
- TERMINATIONS
AP: 1/2" CONDUIT FOR AC COIL AG: DIN CONNECTOR FOR AC COIL
DP: 1/2" CONDUIT FOR DC COIL DG: DIN CONNECTOR FOR DC COIL
- VALVE CONFIGURATION
12: 12VDC
24: 24VDC
115: 115VAC
230: 230VAC
- CONTROL SERIES
W: A, B LINE
A: A LINE
B: B LINE
- NOMINAL SIZE
03: 3/8" SERIES
- MODULAR SOLENOID CHECK VALVE

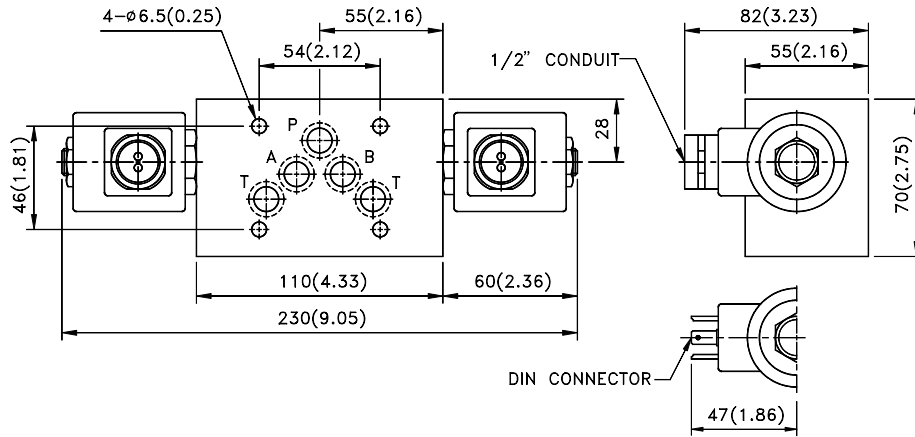
SPECIFICATIONS

MAX. OPERATING PRESSURE	210 kgf/cm ² (3000 PSI)
MAX. FLOW CAPACITY	60 LPM (16 GPM)

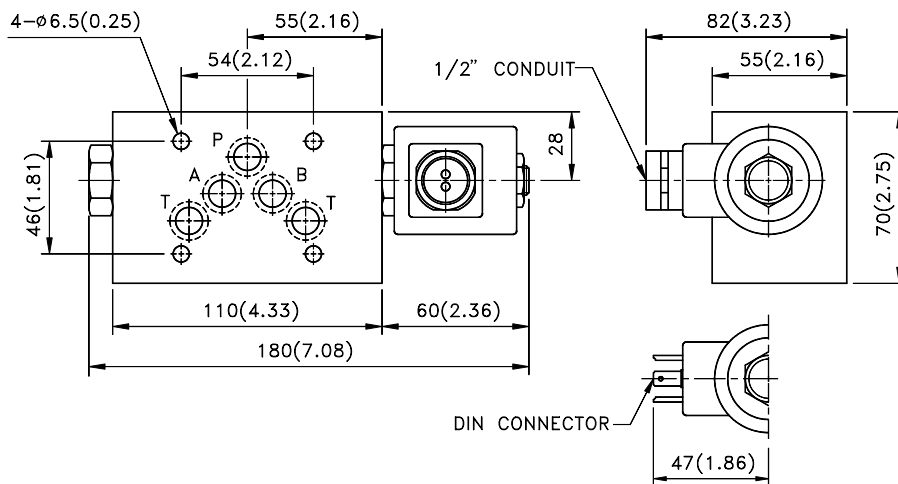
MSC-03 SERIES

MSC - 03W - ***** - ** - **

UNIT: mm/(inch)



MSC - 03A - ***** - ** - **



MSC - 03B - ***** - ** - **

