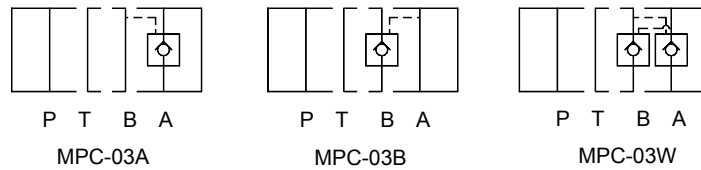
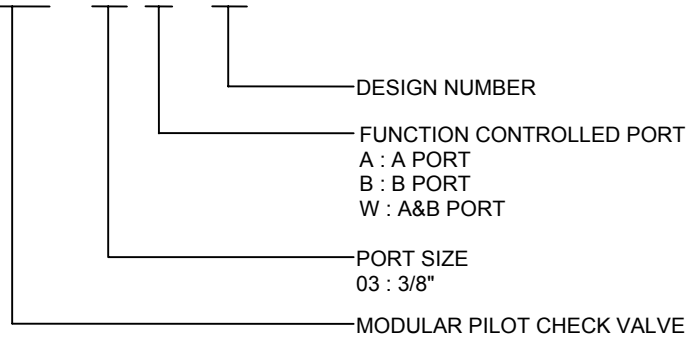


SYMBOLS



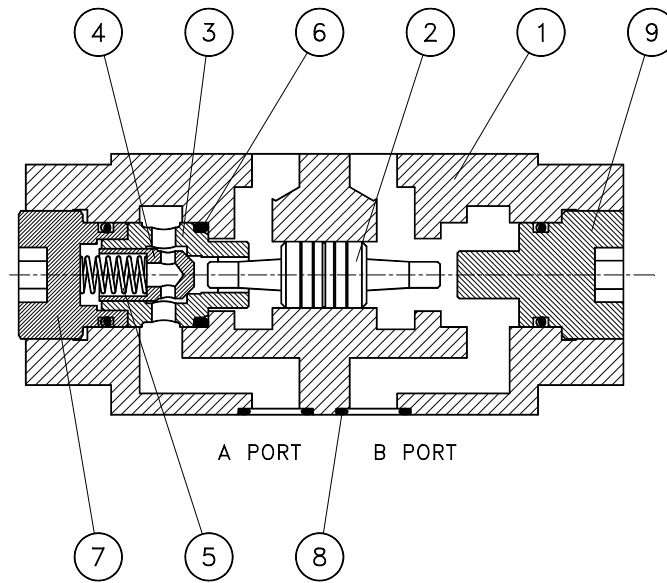
HOW TO ORDER

MPC - 03 W - 30



SPECIFICATIONS

MAX. OPERATING PRESSURE	210 kgf/cm ² (3000 PSI)
MAX. FLOW CAPACITY	70 LPM (18.5 GPM)
CRACKING PRESSURE IN FREE FLOW	4 kgf/cm ² (57 PSI)
PILOT RATIO	1 : 3

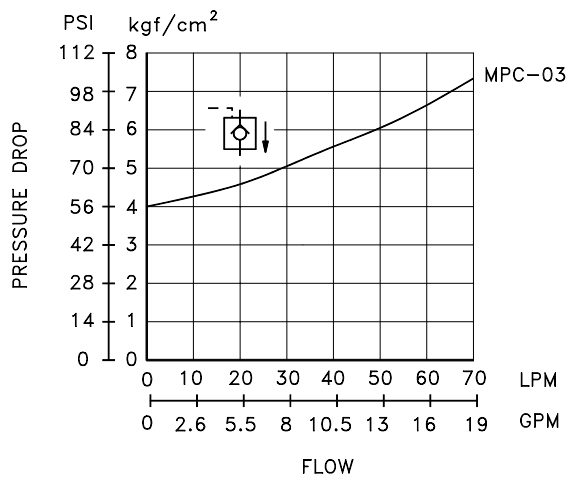


NO.	DESCRIPTION	SPEC.
6	O-RING	P18(90°)
8	O-RING	AS568-014(90°)

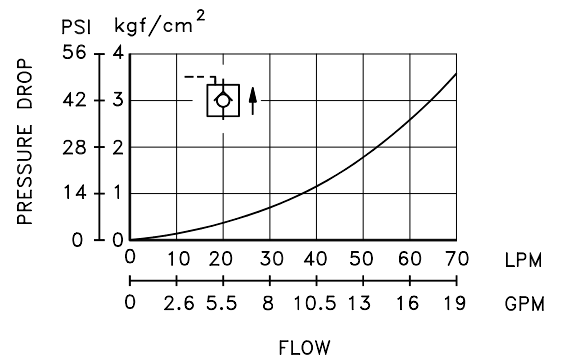
PERFORMANCE CURVES

TEST FLUID VISCOSITY : 35 cSt (175 SSU)
 TEST TEMPERATURE : 50°C (122°F)

PRESSURE DROP FOR FREE FLOW



PRESSURE DROP FOR REVERSED CONTROLLED FLOW

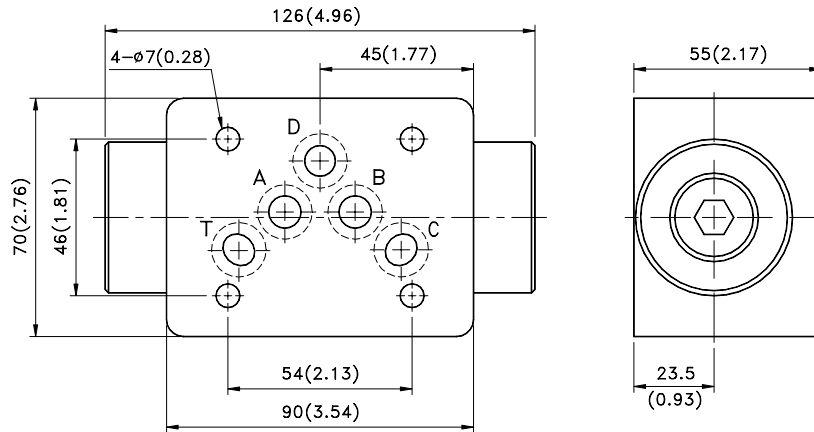




INSTALLATION DIMENSIONS

MPC - 03* - 30

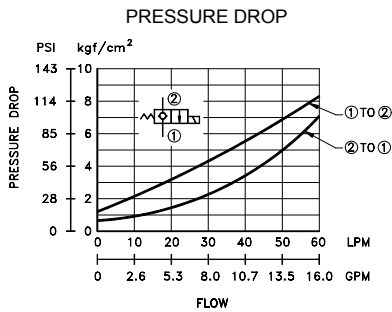
UNIT: mm/(inch)
WEIGHT: 2.7kgs(5.95lbs)



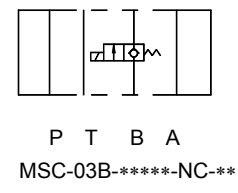
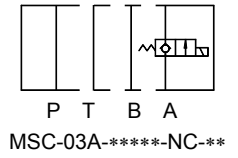
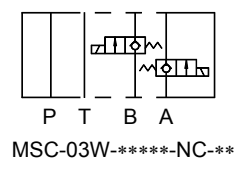


PERFORMANCE CURVES

TEST FLUID VISCOSITY : 35 cSt (175 SSU)
 TEST TEMPERATURE : 50°C (122°F)

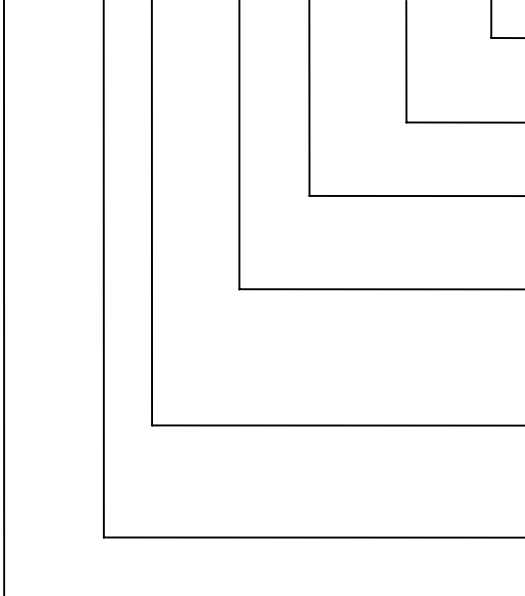


SYMBOLS



HOW TO ORDER

MSC - 03 W - 230 AP - NC - 10



- OPTION
 10: W/O MANUAL-OVERRIDE OPTION
 20: W/I MANUAL-OVERRIDE OPTION
- VALVE CONFIGURATION
 NC: NORMALLY-CLOSED
- TERMINATIONS
 AP: 1/2" CONDUIT FOR AC COIL AG: DIN CONNECTOR FOR AC COIL
 DP: 1/2" CONDUIT FOR DC COIL DG: DIN CONNECTOR FOR DC COIL
- VALVE CONFIGURATION
 12: 12VDC
 24: 24VDC
 115: 115VAC
 230: 230VAC
- CONTROL SERIES
 W: A, B LINE
 A: A LINE
 B: B LINE
- NOMINAL SIZE
 03: 3/8" SERIES
- MODULAR SOLENOID CHECK VALVE

SPECIFICATIONS

MAX. OPERATING PRESSURE	210 kgf/cm ² (3000 PSI)
MAX. FLOW CAPACITY	60 LPM (16 GPM)

