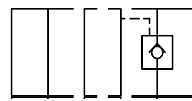
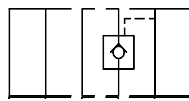


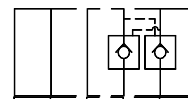
SYMBOLS



P T B A
MPC-02A



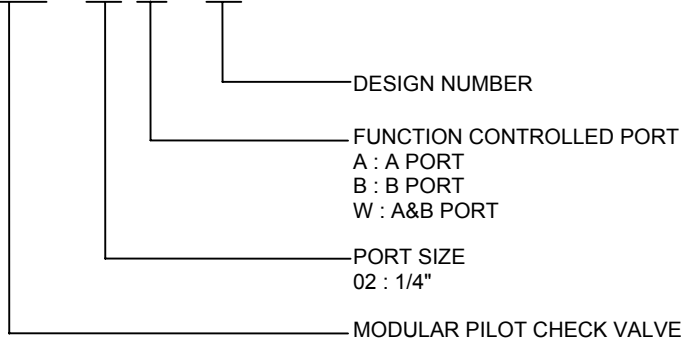
P T B A
MPC-02B



P T B A
MPC-02W

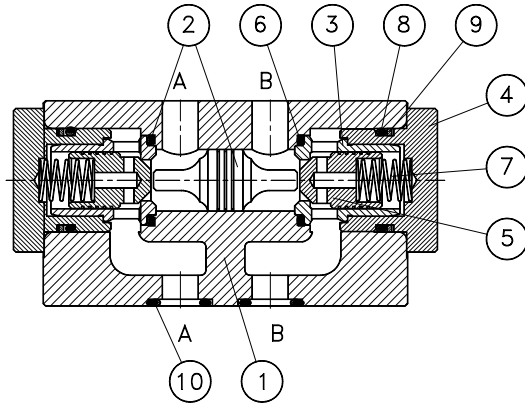
HOW TO ORDER

MPC - 02 W - 30



SPECIFICATIONS

MAX. OPERATING PRESSURE	210 kgf/cm ² (3000 PSI)
MAX. FLOW CAPACITY	35 LPM (9.3 GPM)
CRACKING PRESSURE IN FREE FLOW	0.6 kgf/cm ² (8.5 PSI)
PILOT RATIO	1 : 2.25

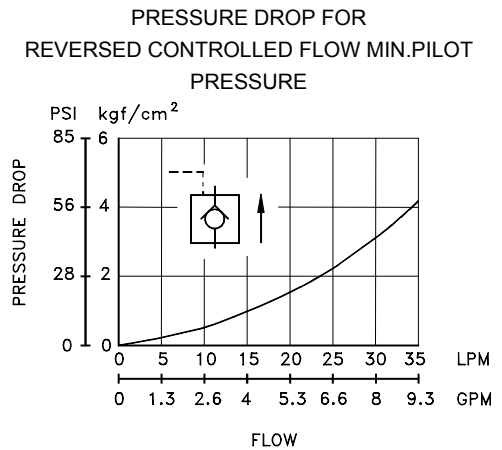
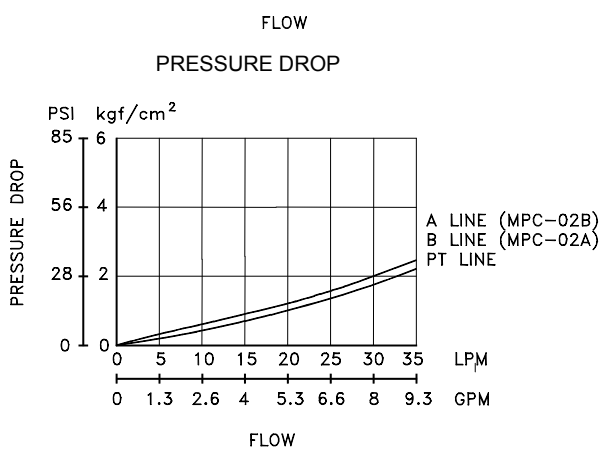
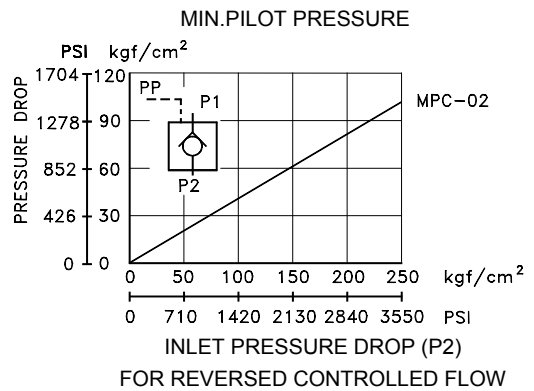
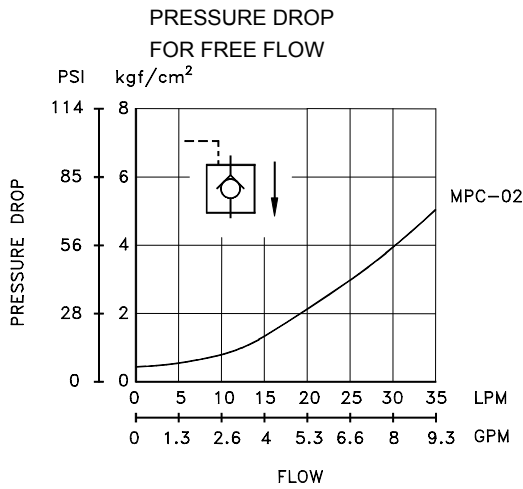


NO.	DESCRIPTION	SPEC.	NO.	DESCRIPTION	SPEC.
6	O-RING	AS568-015(70°)	9	BACK-UP RING	AS568-017
8	O-RING	AS568-017(70°)	10	O-RING	AS568-012(90°)

PERFORMANCE CURVES

TEST FLUID VISCOSITY : 35 cSt (175 SSU)

TEST TEMPERATURE : 50°C (122°F)





INSTALLATION DIMENSIONS

MPC - 02* - 30

UNIT: mm(inch)

WEIGHT: 1.1 kgs(2.43 LBS)

