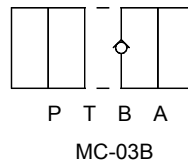
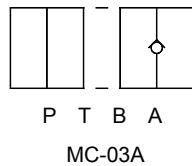
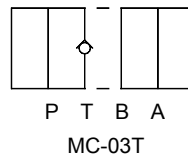
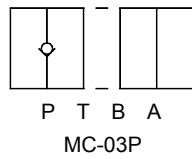
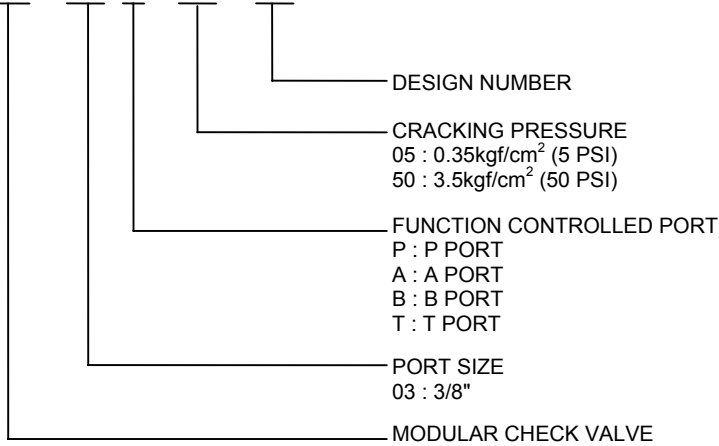


**SYMBOLS**



**HOW TO ORDER**

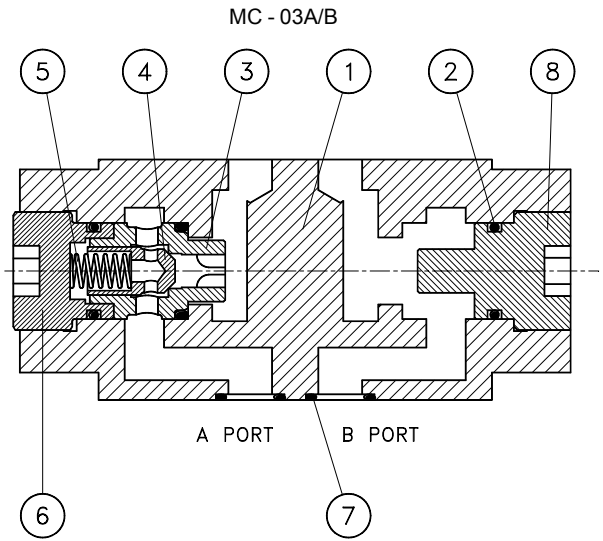
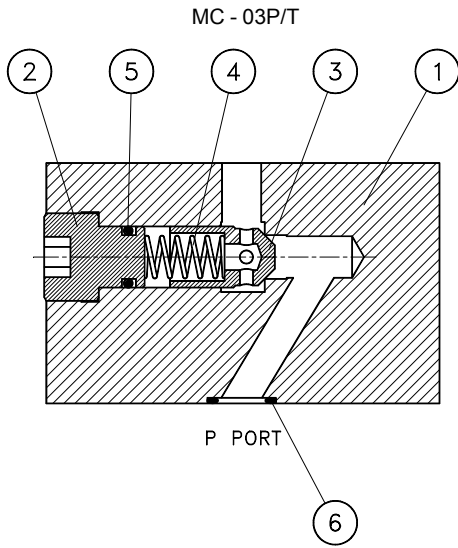
**MC - 03 P - 50 - 30**



**SPECIFICATIONS**

MAX. OPERATING PRESSURE	210 kgf/cm <sup>2</sup> (3000 PSI)
MAX. FLOW CAPACITY	70 LPM (18.5 GPM)

# MC-03 SERIES



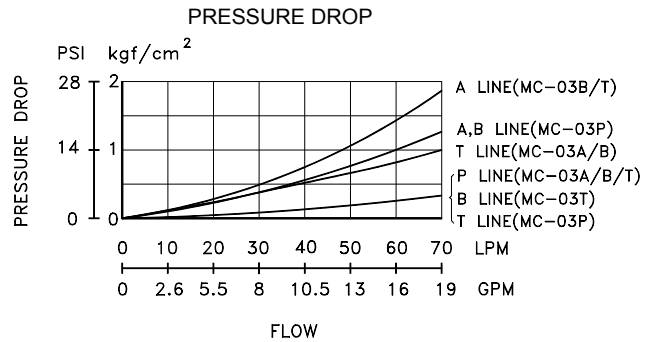
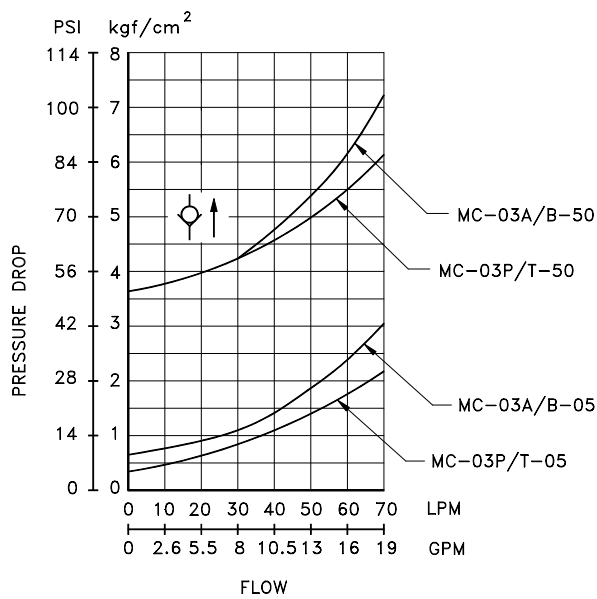
NO.	DESCRIPTION	SPEC.
5	O-RING	P10(90°)
6	O-RING	AS568-014(90°)

NO.	DESCRIPTION	SPEC.
2	O-RING	P18(90°)
7	O-RING	AS568-014(90°)

## PERFORMANCE CURVE

TEST FLUID VISCOSITY : 35 cSt (175 SSU)  
 TEST TEMPERATURE : 50°C (122°F)

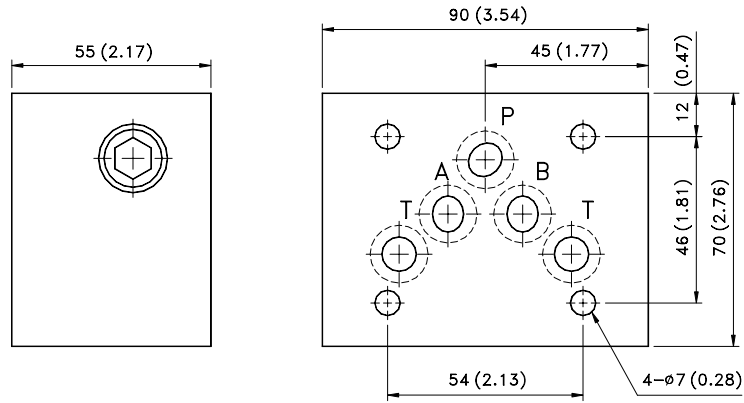
PRESSURE DROP  
FOR FREE FLOW



**INSTALLATION DIMENSIONS**

MC - 03P/T - \*\* - 30

UNIT: mm/(inch)  
WEIGHT: 2.3kgs(5.07lbs)



MC - 03A/B - \*\* - 30

