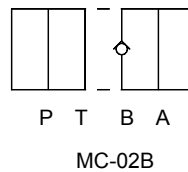
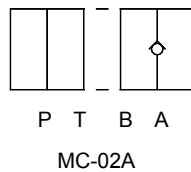
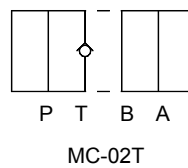
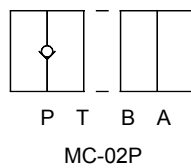
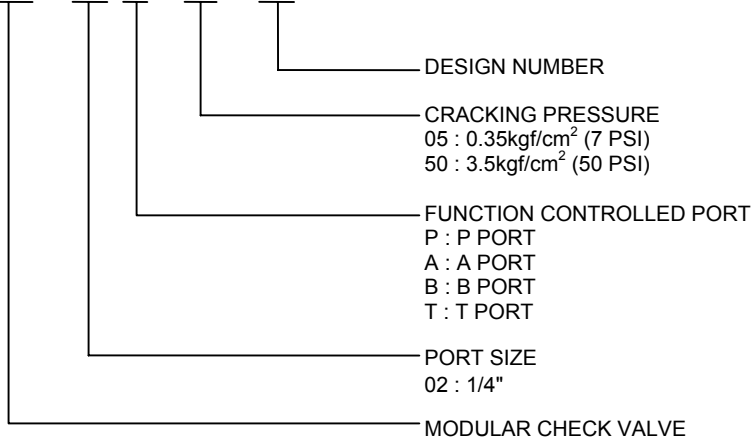


SYMBOLS



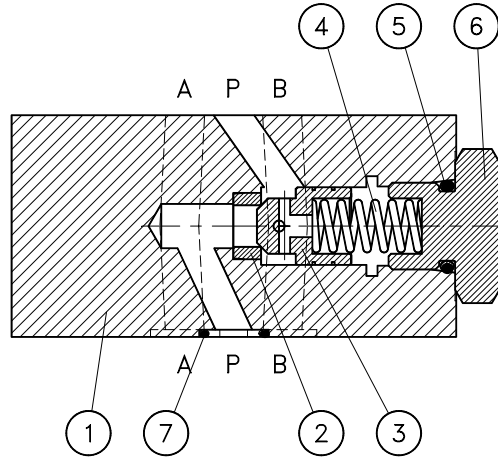
HOW TO ORDER

MC - 02 P - 50 - 20



SPECIFICATIONS

| | |
|-------------------------|------------------------------------|
| MAX. OPERATING PRESSURE | 210 kgf/cm ² (3000 PSI) |
| MAX. FLOW CAPACITY | 35 LPM (9.3 GPM) |

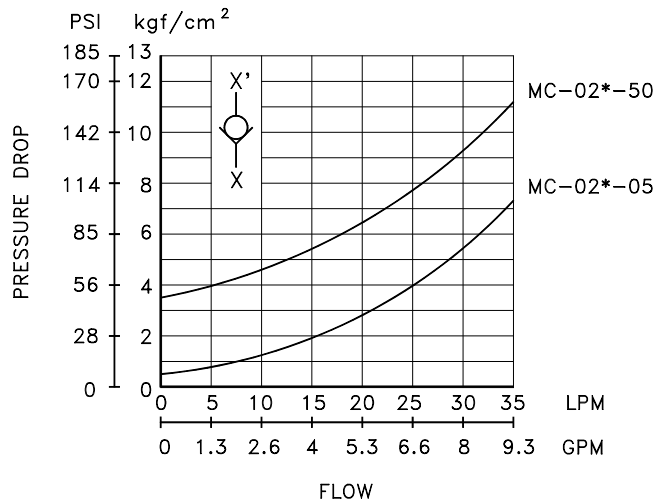


| NO. | DESCRIPTION | SPEC. | NO. | DESCRIPTION | SPEC. |
|-----|-------------|------------|-----|-------------|----------------|
| 5 | O-RING | P12.5(90°) | 7 | O-RING | AS568-012(90°) |

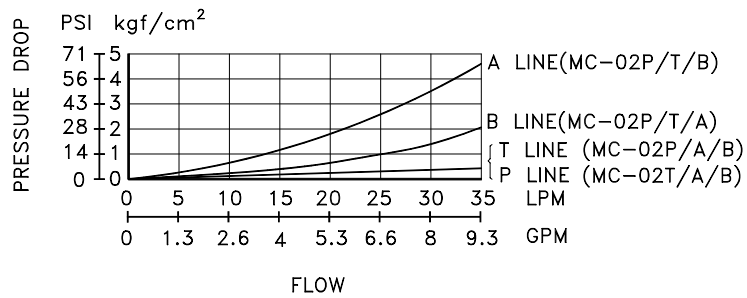
PERFORMANCE CURVES

TEST FLUID VISCOSITY : 35 cSt (175 SSU)
 TEST TEMPERATURE : 50°C (122°F)

PRESSURE DROP
 FOR FREE FLOW

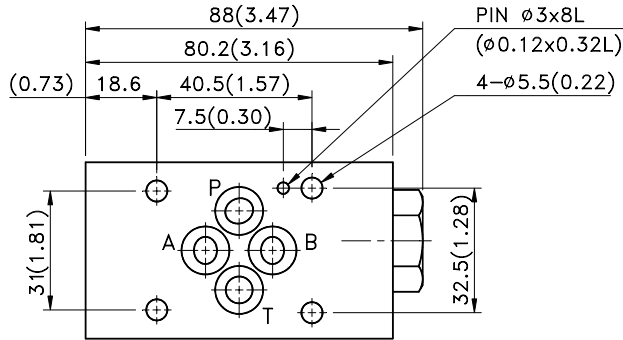


PRESSURE DROP



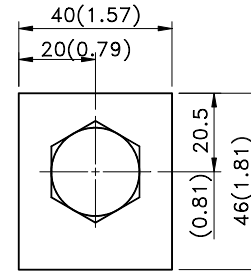
INSTALLATION DIMENSIONS

MC - 02P - ** - 20

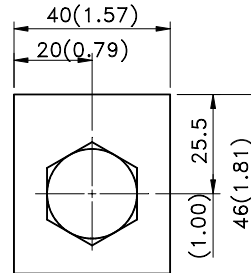
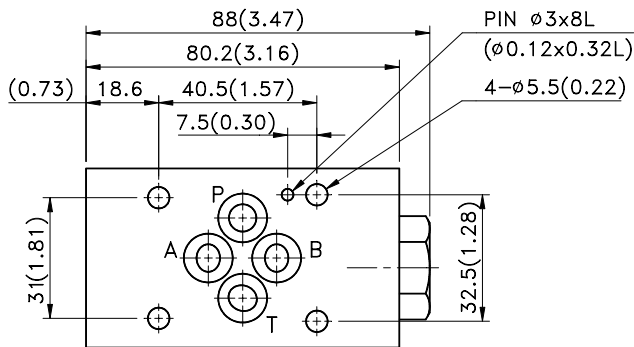


UNIT: mm(inch)

WEIGHT: 1.2 kgs(2.65 LBS)



MC - 02T - ** - 20

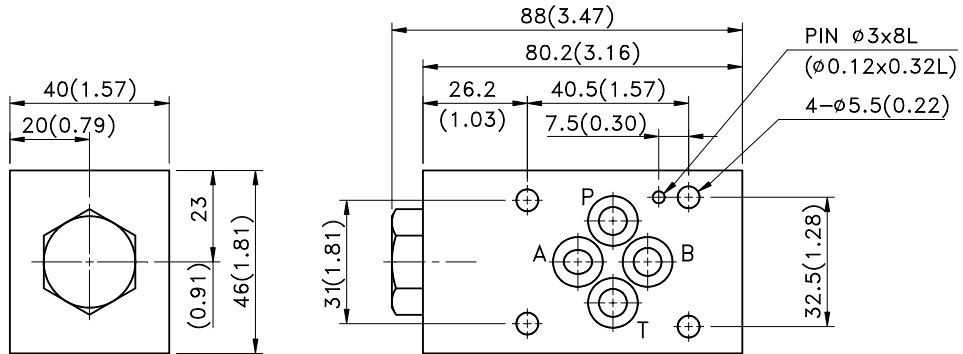


MC-02 SERIES

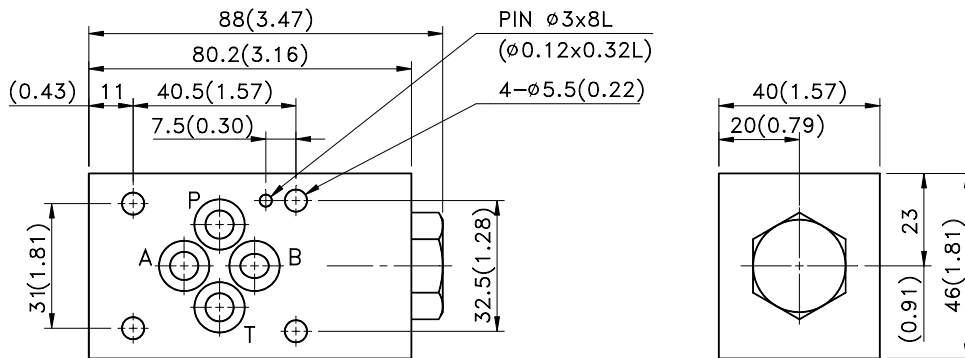
MC - 02A - ** - 20

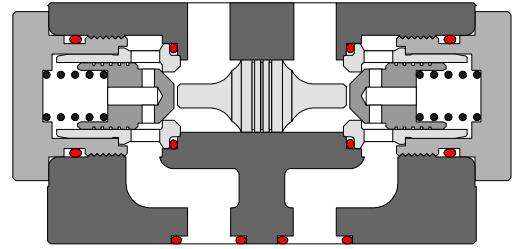
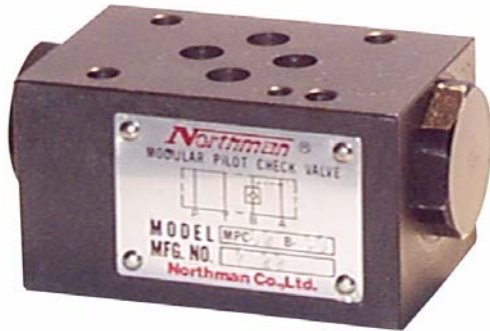
UNIT: mm(inch)

WEIGHT: 1.2 kgs(2.65 lbs)

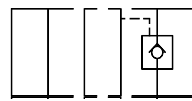


MC - 02B - ** - 20

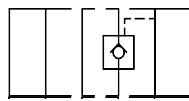




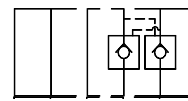
SYMBOLS



P T B A
MPC-02A



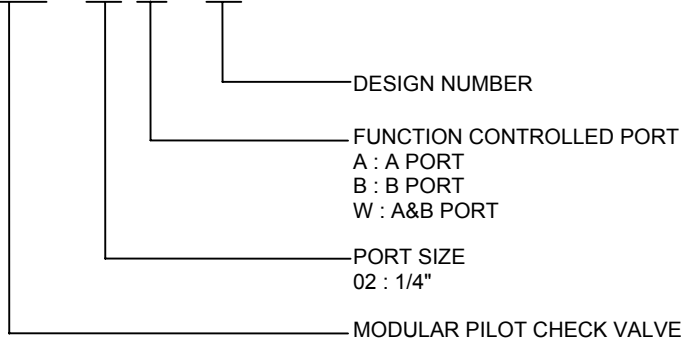
P T B A
MPC-02B



P T B A
MPC-02W

HOW TO ORDER

MPC - 02 W - 30



SPECIFICATIONS

| | |
|--------------------------------|------------------------------------|
| MAX. OPERATING PRESSURE | 210 kgf/cm ² (3000 PSI) |
| MAX. FLOW CAPACITY | 35 LPM (9.3 GPM) |
| CRACKING PRESSURE IN FREE FLOW | 0.6 kgf/cm ² (8.5 PSI) |
| PILOT RATIO | 1 : 2.25 |