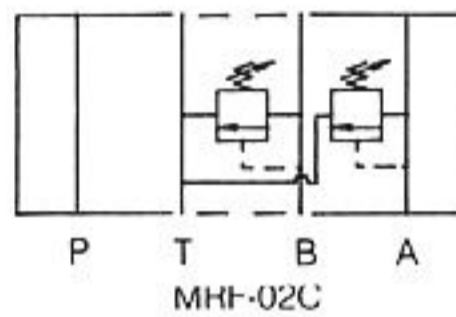
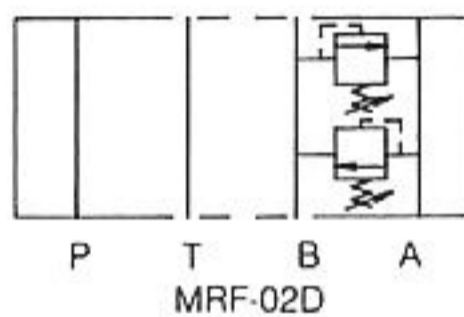
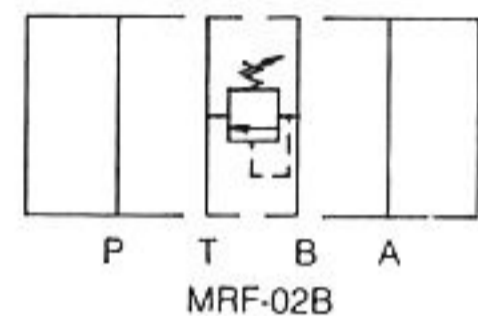
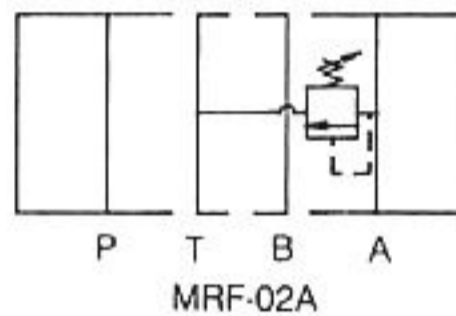
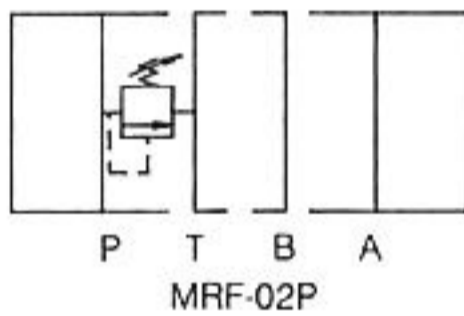


## SPECIFICATIONS

Max. operating pressure	210 Kg/cm <sup>2</sup> (3000PSI)
Max. flow capacity	35 LPM (9.3 GPM)

## SYMBOLS



## HOW TO ORDER

**MRF - 02P - K - 1 - 20**

DESIGN NUMBER

PRESSURE ADJUSTMENT RANGE :

1 : 8-70KGF/CM<sup>2</sup> (120-1000PSI)

2 : 35-140KGF/CM<sup>2</sup> (500-2000PSI)

3 : 70-210KGF/CM<sup>2</sup> (1000-3000PSI)

ADJUSTMENT MODEL :

K : WITH KNOB

NO CODE: WITHOUT KNOB

FUNCTION PORT :

P : P PORT

A : A PORT

B : B PORT

C : A&B PORT VENTING TO TANK

D : A&B PORT CROSS OVER RELIEF

PORT SIZE: 1/4" (D03)

MODULAR RELIEF VALVE

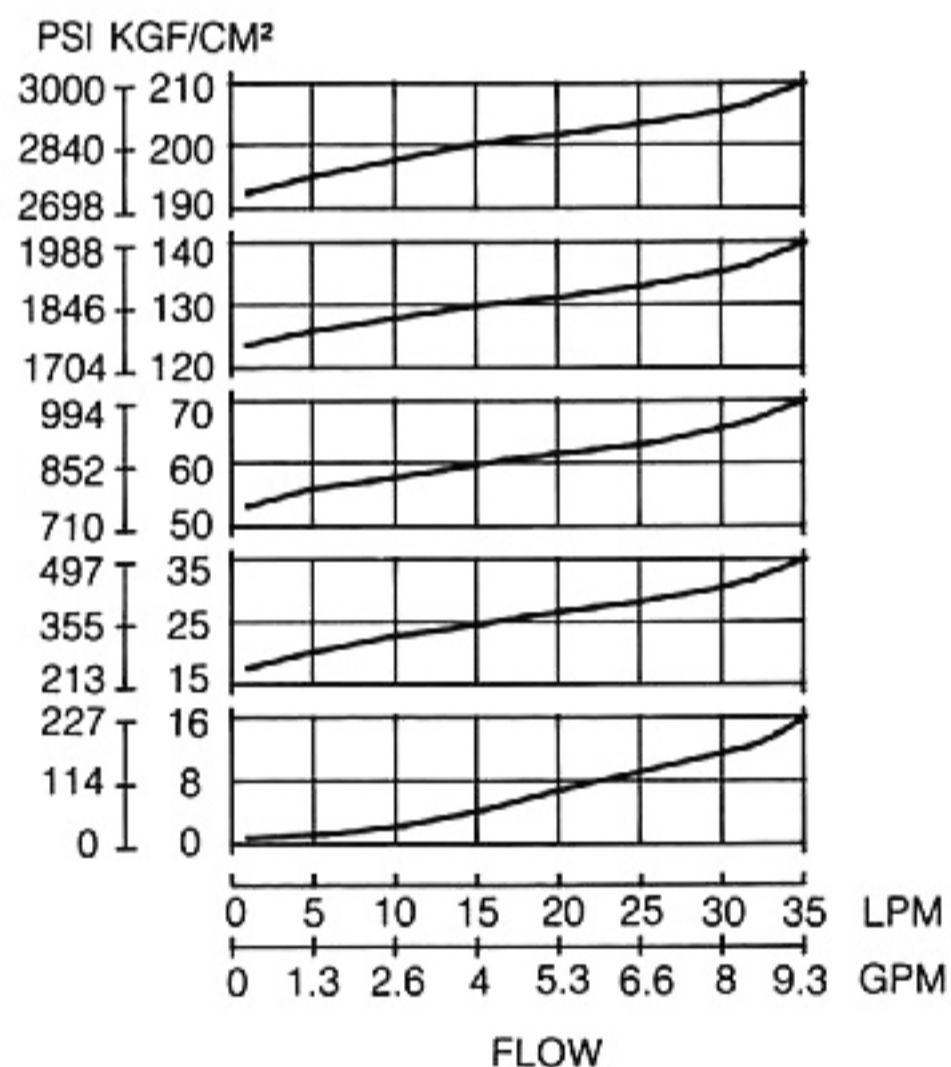
# MRF-02 SERIES

## PERFORMANCE CURVES

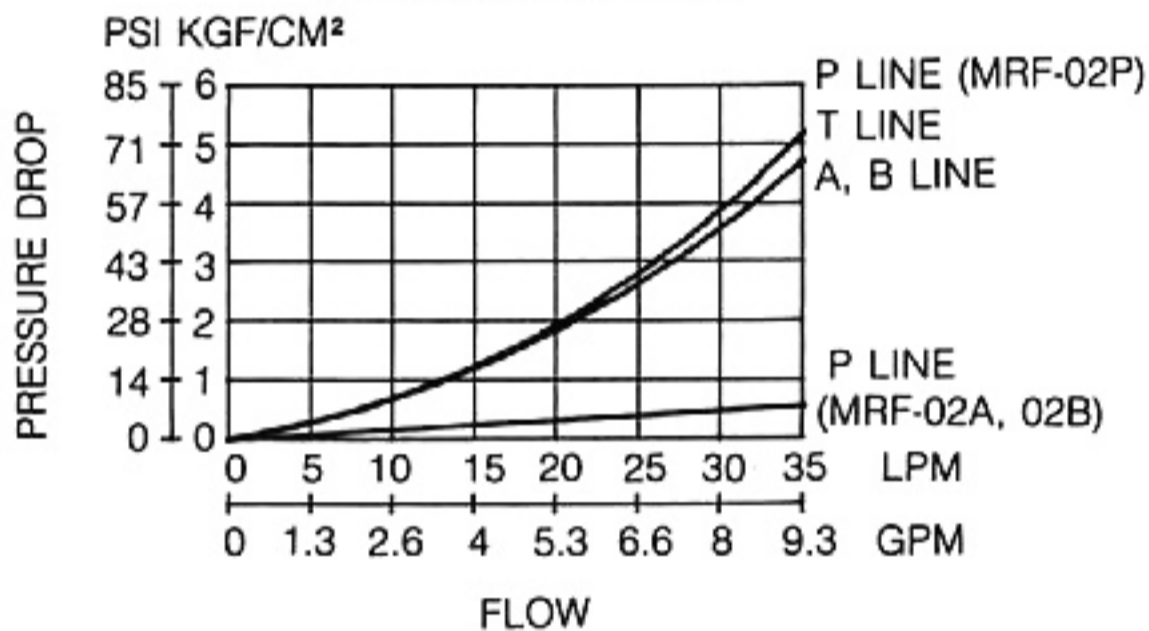
### TEST CONDITIONS

Viscosity: 35 CST  
 Temperature: 50°C

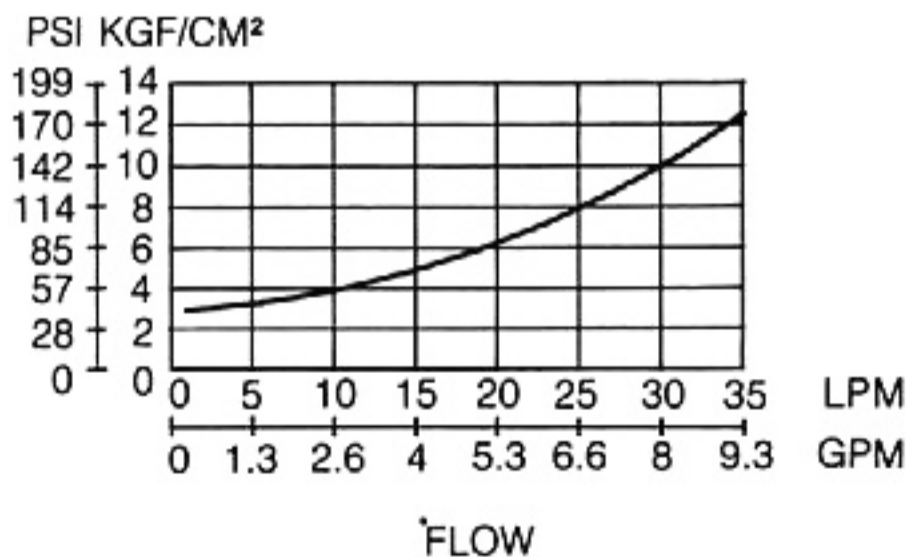
### NOMINAL OVERRIDE CHARACTERISTICS



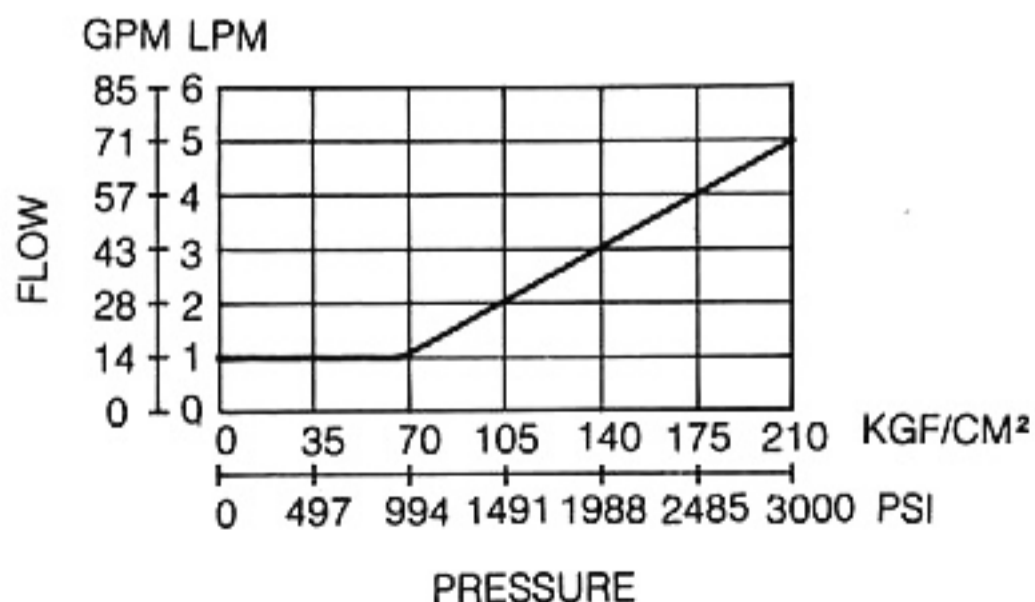
### PRESSURE DROP



### MIN. ADJUSTMENT PRESSURE



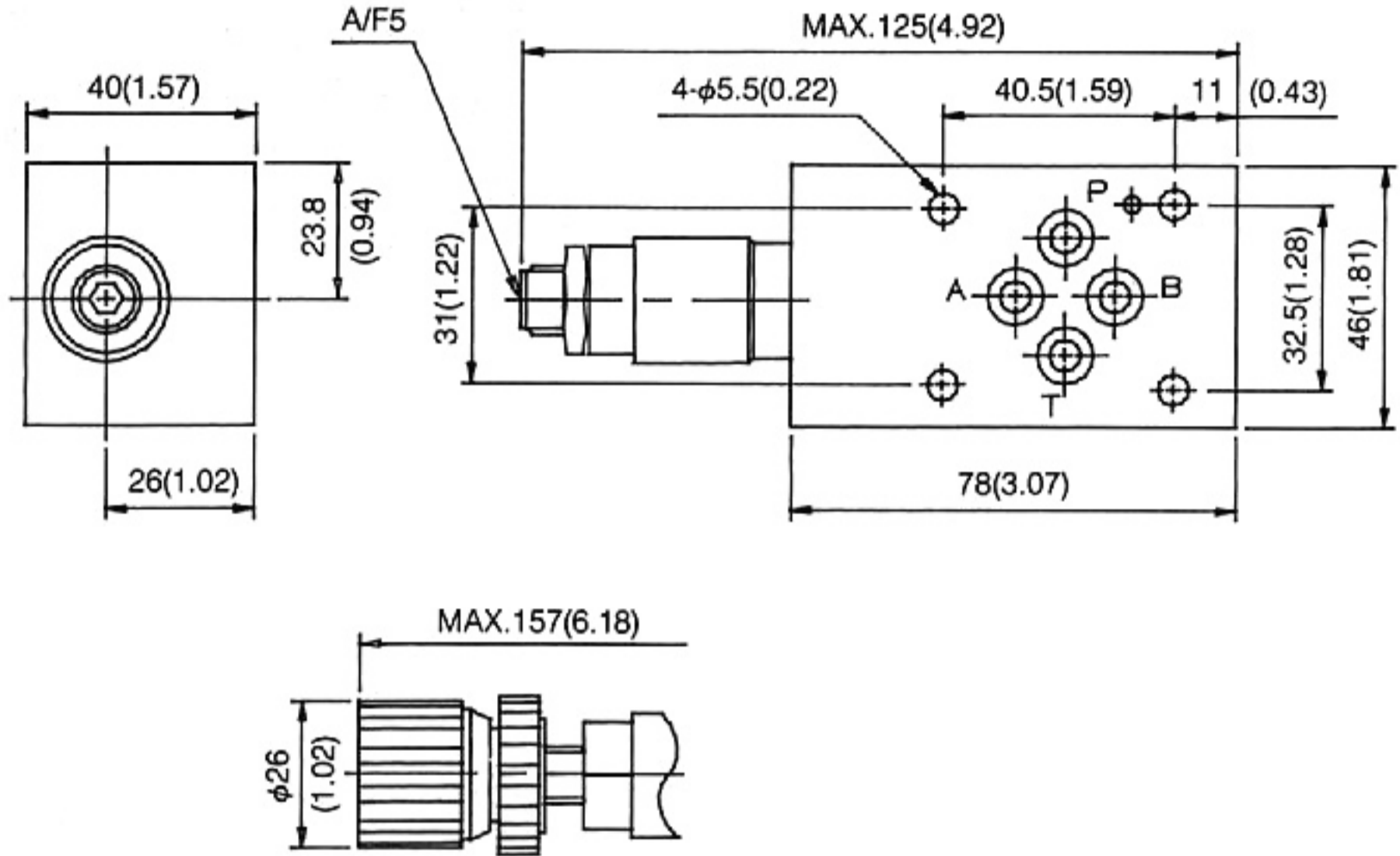
### MIN. FLOW CHARACTERISTICS



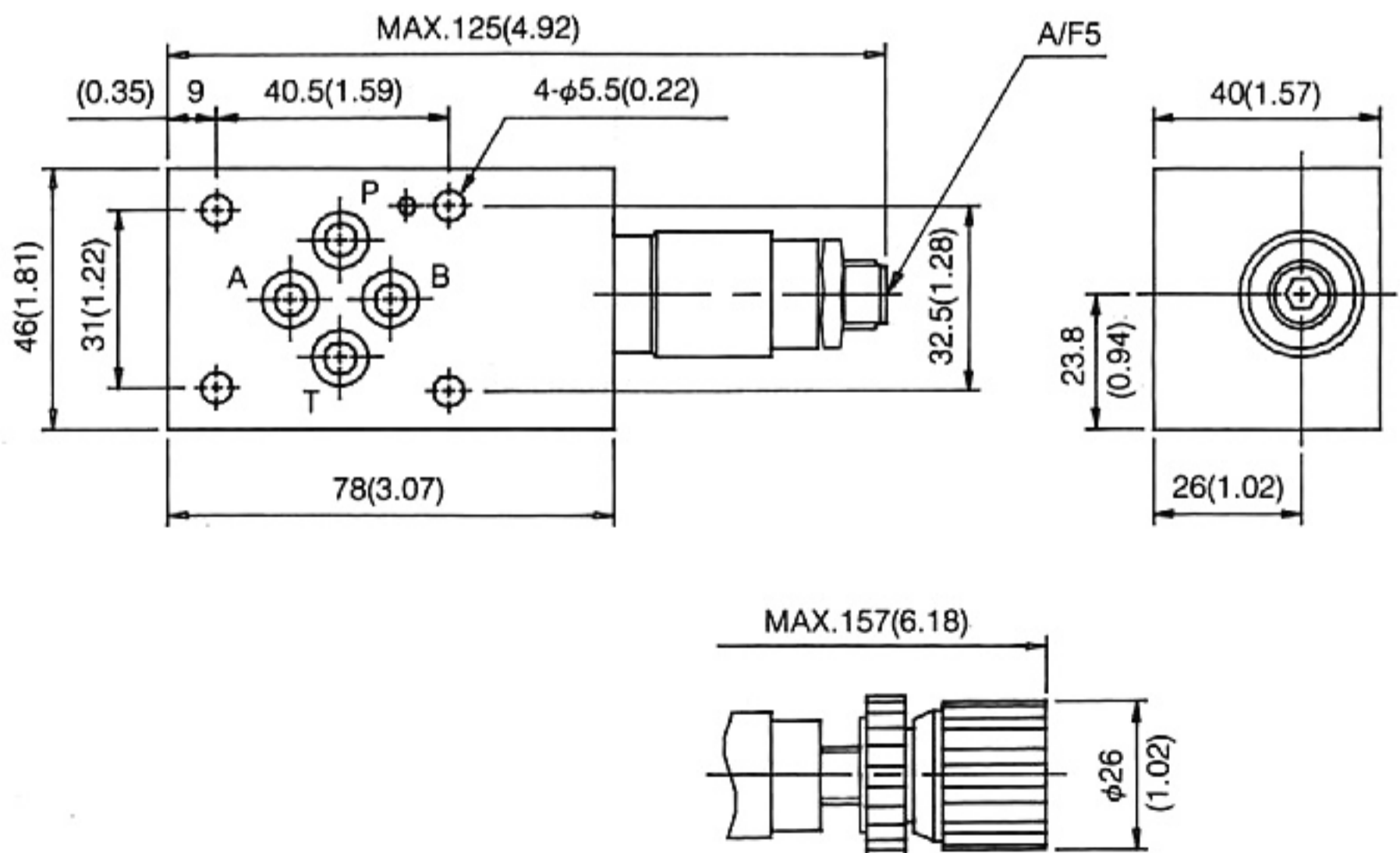
INSTALLATION DIMENSIONS

UNIT: mm (inch)  
WEIGHT: 1.5 kgs (3.3 lbs)

MRF-02A-\*\*-\*\*-20



MRF-02P/B-\*\*-\*\*-20

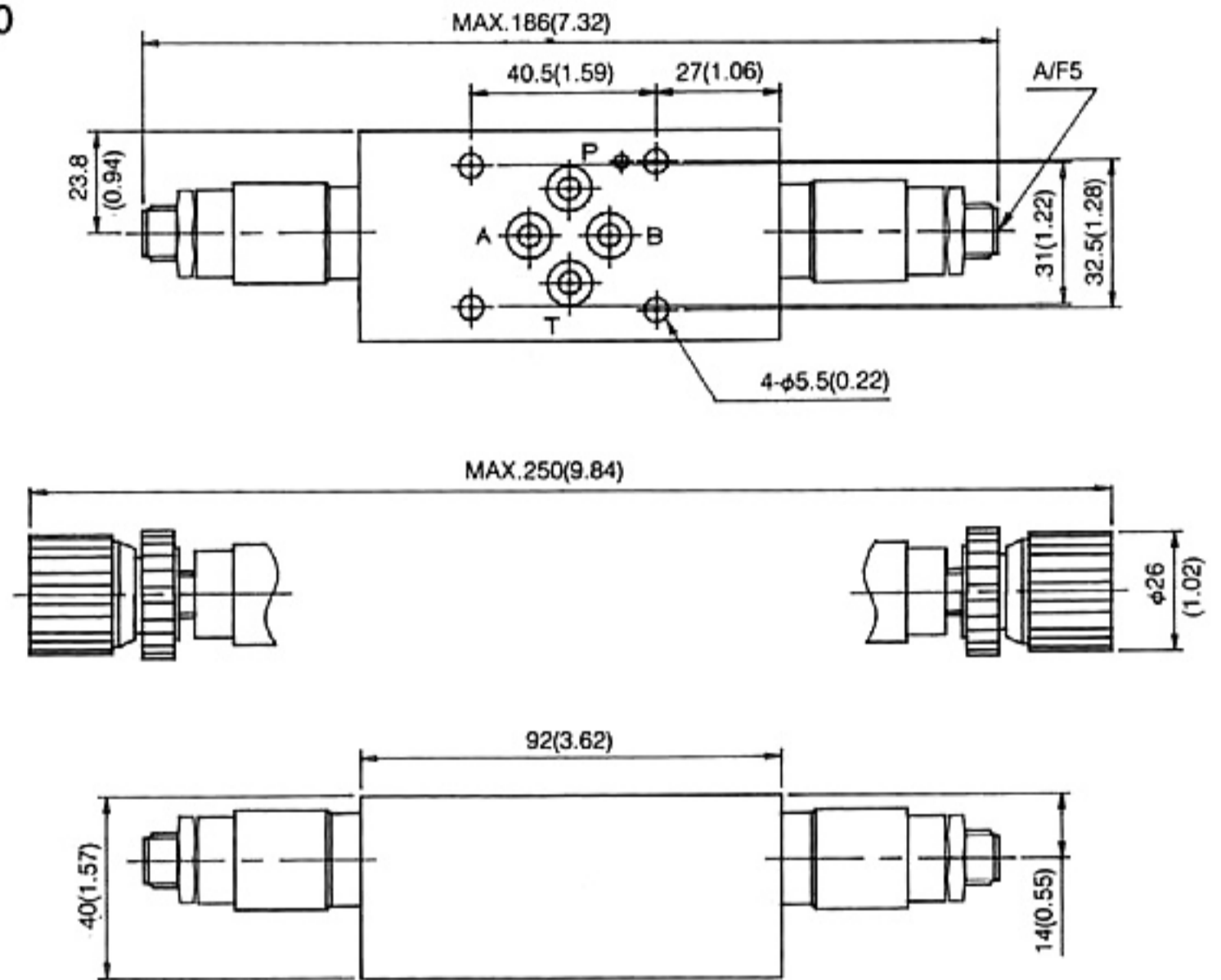


# MRF-02 SERIES

## INSTALLATION DIMENSIONS

UNIT: mm(inch)  
WEIGHT: 1.7 kgs (3.75 lbs)

MRF-02C-\*\*-\*\*-20



MRF-02D-\*\*-\*\*-20

