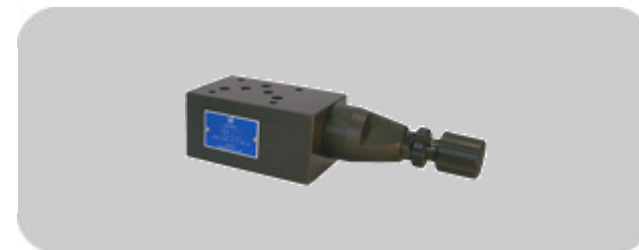


## MODULAR RELIEF VALVE

### MPR-06 SERIES

The modular adjustable pressure reducing valve will ensure that the operating pressure in a branch of a hydraulic system will be maintained at a lower setting than that of the main system pressure. The valve functions on the P port and is internally drained. Adjustment is made with a calibrated knob, standard with the valve.

As a modular valve, this valve mounts between an NFPA D08 size directional control valve and the subplate. A longer than standard bolt kit is required when mounting modular valves in a stack. Refer to [bolt kits](#).



#### Quick Links

[Model Code](#)

#### Model Code - [top](#)

**MPR – 06 P – K – 2 – \*\* -N**

1 2 3 4 5 6

1 **Series**

**MPR:** Modular Pressure Reducing Valve

2 **Mounting Style**

**06:** NFPA Size D08

3 **Function Port**

**P:** P Port

4 **Adjustment Style**

**K:** Adjusting Knob

5 **Pressure Adj. Range**

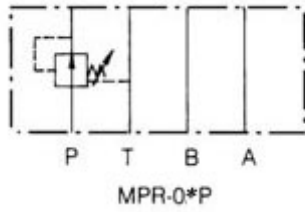
**1:** 8-70 BAR (120-1000 PSI)

**2:** 35-40 BAR (500-2000 PSI)

**3:** 70-210 BAR (1000-3000 PSI)

6 **Design Number**

#### Symbols - [top](#)



---

**Features - [top](#)**

Max. operating pressure	250 BAR (3675 PSI)
Max. flow capacity	250 LPM (66 GPM)