

MODULAR RELIEF VALVE

MPR-04 SERIES

The modular adjustable pressure reducing valve will ensure that the operating pressure in a branch of a hydraulic system will be maintained at a lower setting than that of the main system pressure. The valve functions on the P port and is internally drained. Adjustment is made with a calibrated knob, standard with the valve.

As a modular valve, this valve mounts between an NFPA D07 size directional control valve and the subplate. A longer than standard bolt kit is required when mounting modular valves in a stack. Refer to [bolt kits](#).



Quick Links

[Model Code](#)

Model Code - [top](#)

MPR – 04 P – K – 2 – **

1

2

3

4

5

6

1 Series

MPR: Modular Pressure Reducing Valve

2 Mounting Style

04: NFPA Size D07

3 Function Port

P: P Port

4 Adjustment Style

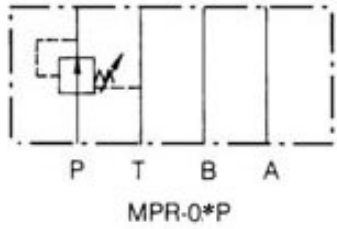
K: Adjusting Knob

5 Pressure Adj. Range

2: 35-40 BAR (500-2000 PSI)

6 Design Number

Symbols - [top](#)



Features - [top](#)

Max. operating pressure	250 BAR (3675 PSI)
Max. flow capacity	190 LPM (50 GPM)

Dimensions - [top](#)

MPR-04P

