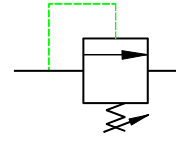


SYMBOL

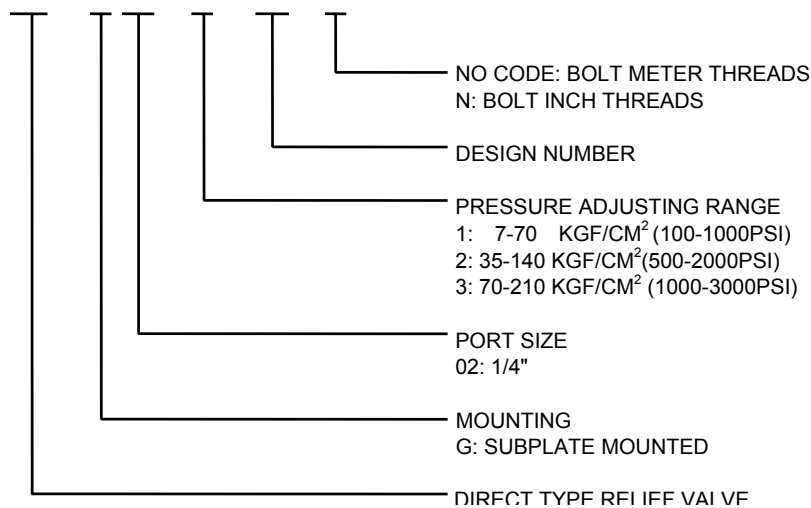


SPECIFICATIONS

MODEL	MAX. PRESSURE KGF/CM ² (PSI)	PRESSURE ADJ. RANGE KGF/CM ² (PSI)	RATE FLOW LPM(GPM)	BOLT METER(INCH)
RF-G02	210(3000)	1: 7-70(100-1000)	16(4.2)	M5x40L 4 PCS (#10-24UNC-1 1/2")
		2: 35-140(500-2000)		
		3: 70-210(1000-3000)		

HOW TO ORDER

RF - G02 - 1 - 10 - N

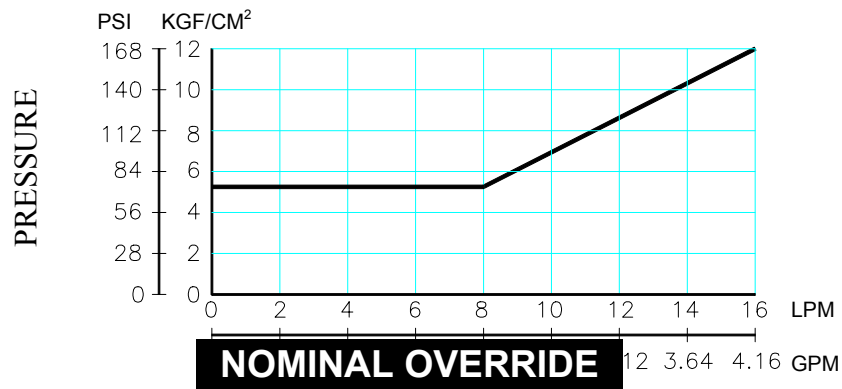




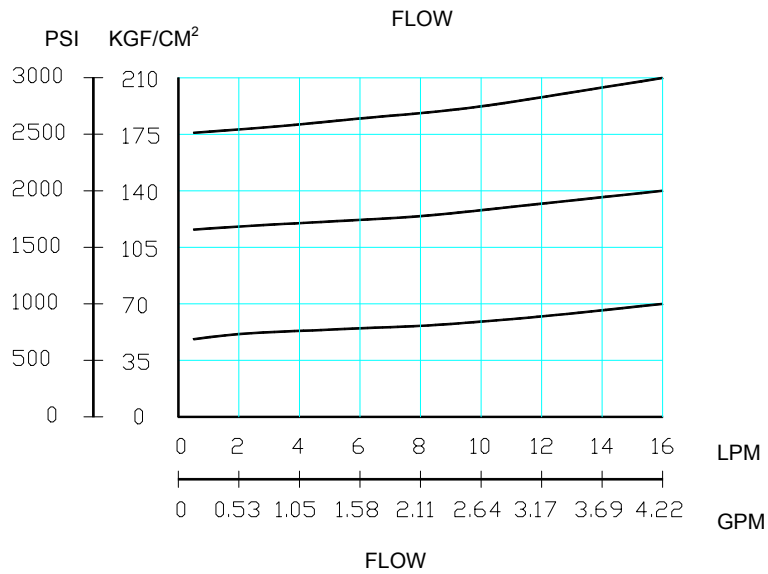
PERFORMANCE CURVES

TEST FLUID VISCOSITY : 35 cSt (175 SSU)
TEST TEMPERATURE : 50°C (122°F)

Min. Adj. PRESSURE



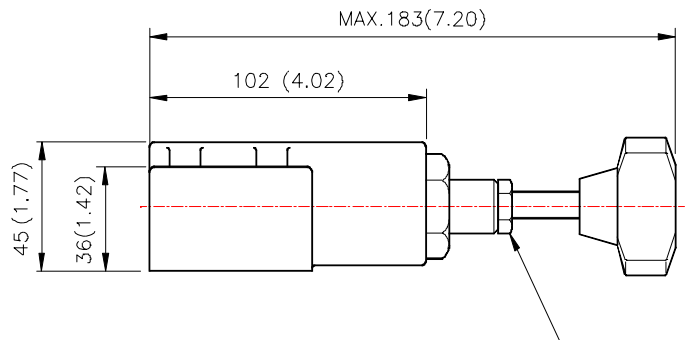
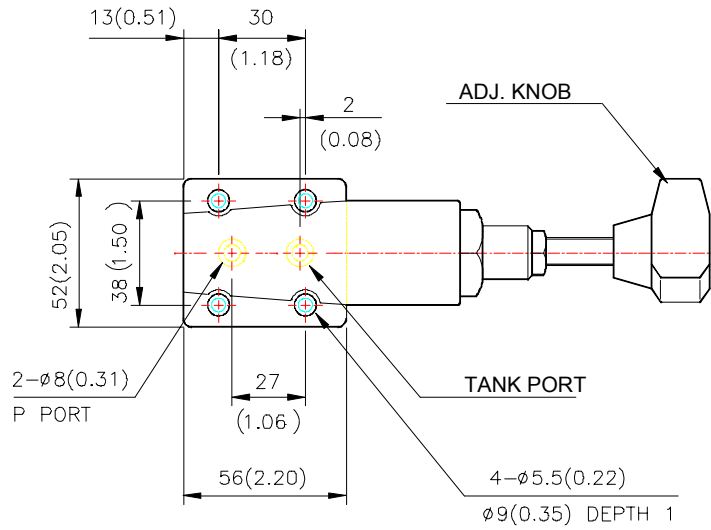
NOMINAL OVERRIDE



INSTALLATION DIMENSIONS

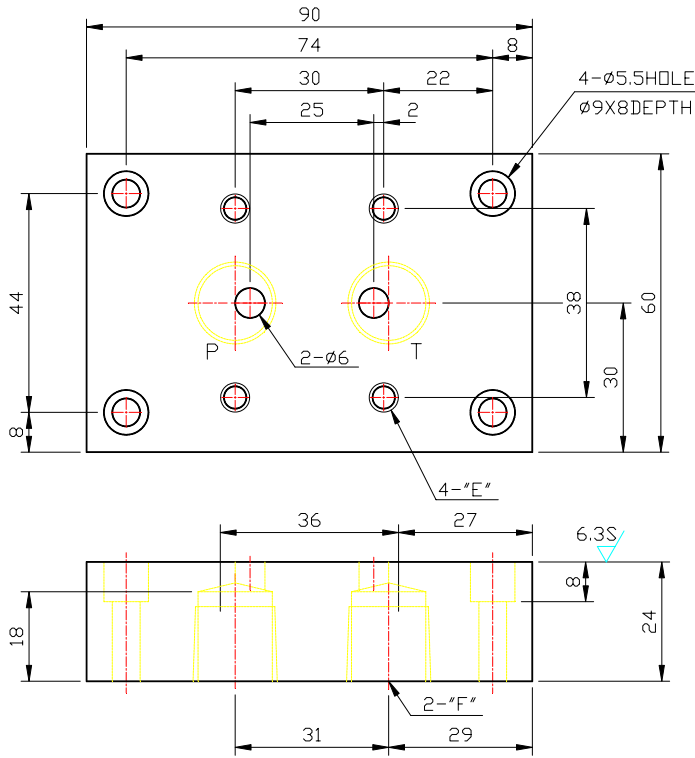
UNIT : mm(inch)
WEIGHT : 1.5kgs(3.4lbs)

RF-G02



INSTALLATION DIMENSIONS

UNIT : mm(inch)



SUBPLATE FOR RF-G01 & RF-G02 SERIES

MODEL	PARTS No.	E	F
MF-02-02	61002259	M5x08Px12L	1/4PT
MF-02-02-N	61002260	#10-24UNCx12L	1/4NPT
MF-02-03	61002261	M5x08PX12L	3/8PT
MF-02-03-N	61002262	#10-24UNCx12L	3/8NPT